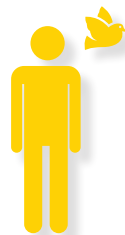


Victoria data

FATALITIES



37 workers
killed each year



30%
vehicle incident



16% falls
from a height



Almost 1 in 4
were farmers

SERIOUS WORKERS' COMPENSATION CLAIMS



22,900
serious claims
each year



17%
muscular stress
while lifting,
carrying objects



17%
muscular stress
while handling
objects



11%
falls
on the same level