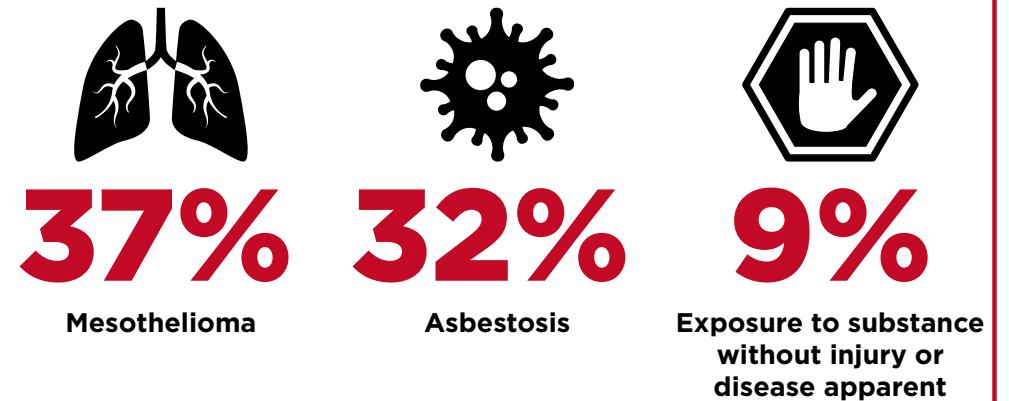


# Asbestos related claims 2010-11 to 2014-15



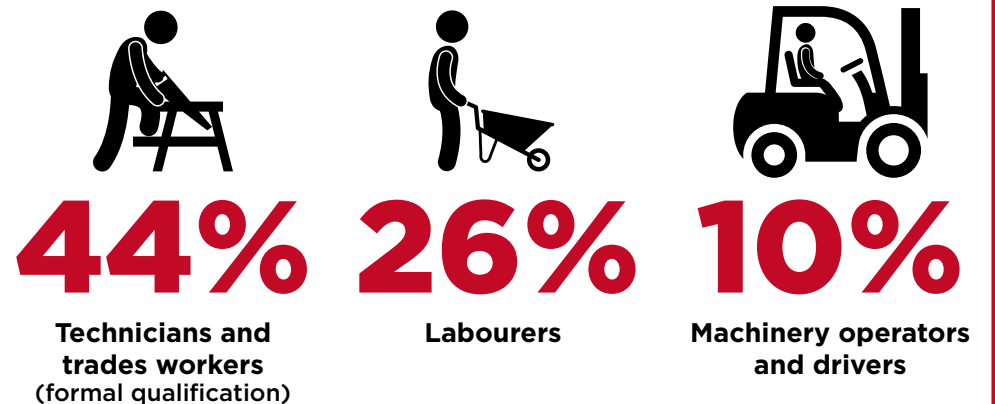
## Asbestos disorders claimed



## Industries



## Occupations most at risk



Source: Safe Work Australia's National Data Set for Compensation-based Statistics

Note: Broadly disease claims, including asbestos-related diseases, are under-represented because many diseases result from long-term exposure to agents or have long latency periods, which makes the link between the work-related disease and the workplace difficult to establish. In addition many mesothelioma cases are compensated through mechanisms other than workers' compensation.



safe work australia