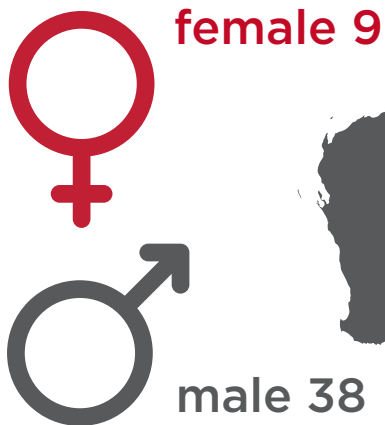


First responder fatalities and injuries

47 fatalities since 2003

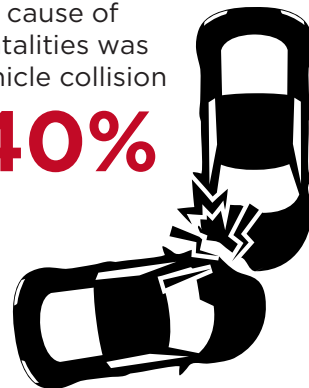


Annual serious claim incidence rate declined 7% between 2000-01 and 2015-16



Most common cause of fatalities was vehicle collision

40%



Serious claim rate is 4 times higher than for all occupations at 37.9 claims per 1000 employees

Most common cause of serious claims:

Mental stress (13%)

Lifting/carrying people (7%)

Assault (5%)

Falls on level ground (5%)



Source: All statistics for this infographic have been sourced from Safe Work Australia's work-related traumatic injury fatalities data set 2016 and national data set for compensation-based statistics 2015-16, First responders are defined as police, fire and emergency workers, paramedics and ambulance officers. Defence force personnel have not been included.