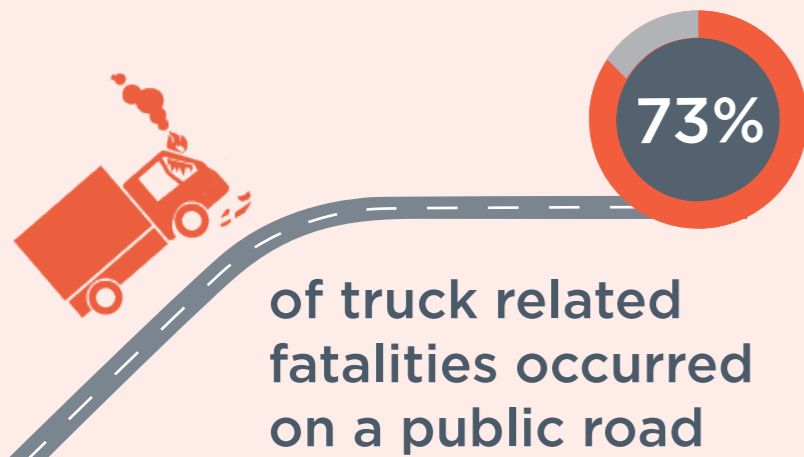


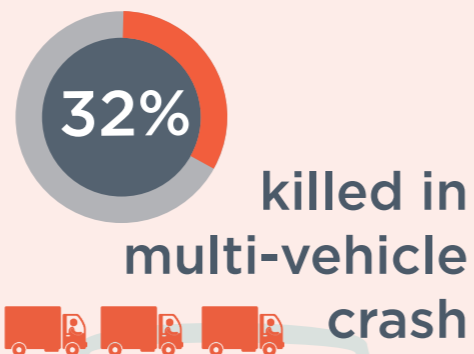
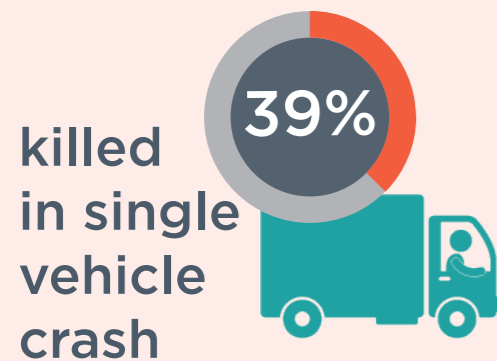
ROAD TRANSPORT FATALITIES



killed while driving a truck

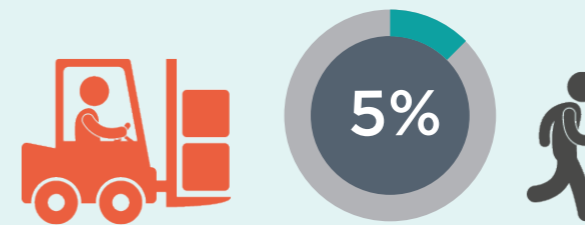


each year working in or around a truck



The road transport fatality data used in this infographic are available from the *Work-related fatalities involving trucks, Australia, 2003 to 2012 report*. The road freight injury data is available from the *Work health and safety in the road freight transport industry report*.

For more information about Safe Work Australia's data and statistics publications [subscribe](#) to 'statistical and data reports' email updates or visit www.safeworkaustralia.gov.au/sites/swa/statistics



of injuries occurred as a result of being hit by a vehicle or other moving objects



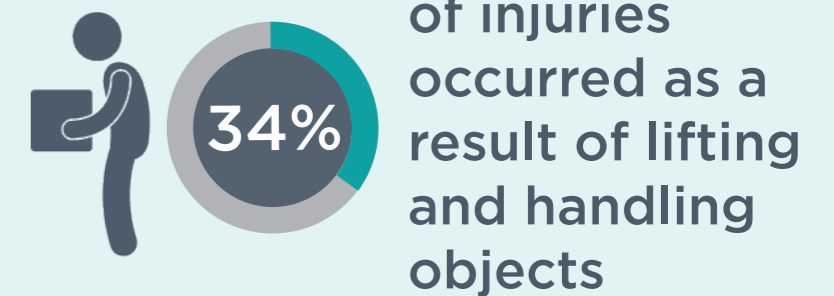
of injuries occurred as a result of a fall from height



each year in the road freight sector



Injured workers typically need



ROAD FREIGHT INJURIES