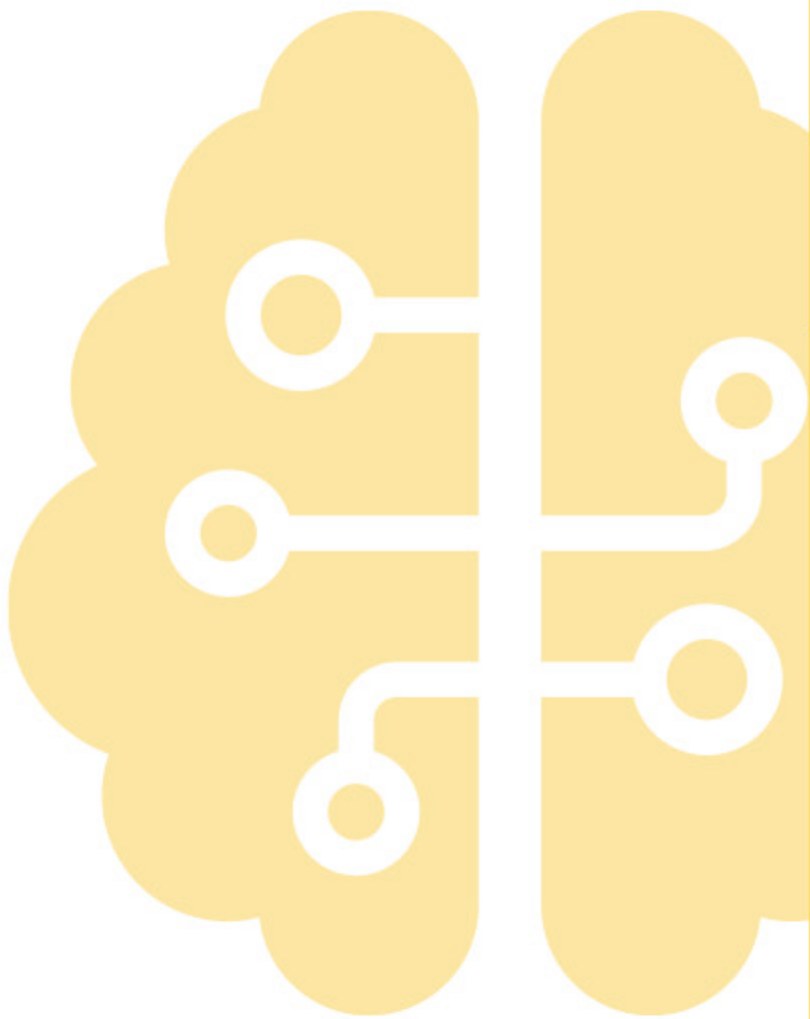




**WORKING TOGETHER TO ENSURE A
SAFE AND HEALTHY WORKPLACE**

The future of work: Artificial intelligence



AI can improve workers' experience and quality of work. New technology capabilities can bring benefits such as safer work and workplaces

Work needs to be designed to ensure a safe and healthy environment for workers. PCBUs must:

- assess the new potential WHS risks created by the use of AI
- eliminate, or if this is not possible, minimise these risks, and
- communicate the role of AI in relation to a task clearly and effectively, making clear who retains responsibility for the risks associated with the task.



Find out more about the
future of work at
safeworkmonth.swa.gov.au

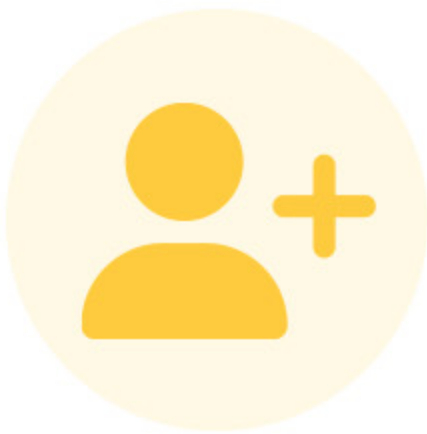




**WORKING TOGETHER TO ENSURE A
SAFE AND HEALTHY WORKPLACE**

New types of work

Changes include:



**more people
have more
than one job**



**an increase
in gig or
platform work**



**more PCBU's
involved in work in
the same location
and shared WHS
responsibilities**



**Find out more about the
future of work at
safeworkmonth.swa.gov.au**





**WORKING TOGETHER TO ENSURE A
SAFE AND HEALTHY WORKPLACE**

The future of work: Demographic shifts



PCBUs must be proactive and design WHS systems and environments that are appropriate for all workers.

Demographic shifts are resulting in:

- An increase in the number of older workers
 - An ageing population means the care support sector and its workforce could double in the next 40 years.¹
- Greater numbers of migrant workers to meet labour shortages
 - Many migrants work in service industries and currently hold over 26 per cent of jobs in Australia.²



Find out more about the
future of work at
safeworkmonth.swa.gov.au



1. 2023 Intergenerational Report – The Treasury 2023
2. New migrant jobs and income data – ABS 2022



**WORKING TOGETHER TO ENSURE A
SAFE AND HEALTHY WORKPLACE**

The future of work: Hybrid work



PCBUs will need to find new ways to engage with workers to identify and manage WHS risks.

Australia has experienced a sharp shift to working from home and more flexible working arrangements, which may:

- increase work hours
- impact risk management processes
- affect worker consultation.



Find out more about the
future of work at
safeworkmonth.swa.gov.au





**WORKING TOGETHER TO ENSURE A
SAFE AND HEALTHY WORKPLACE**

The future of work: Climate-related risks

A warming planet creates WHS risks. Heat, flooding and extreme weather events are increasingly likely to disrupt the normal operation of many businesses.

New technologies and industries are also emerging, creating new roles, as well as new WHS risks.



Find out more about the
future of work at
safeworkmonth.swa.gov.au

