



Keeping all workers safe

The dangers of quadbikes

Every year quad bikes are a major cause of death and serious injury in rural workplaces.

Think safe, work safe, be safe on the farm.

According to Safe Work Australia's quad bike fatality data (2011 to 2018):



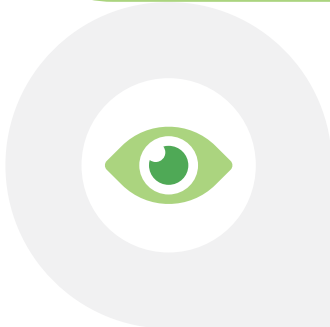
of quad bike fatalities occurred on terrain where an incline was noted by investigators.

60% of quad bike fatalities involved rollovers.

49% of the quad bike fatalities occurred while the rider was not working.

84% of the quad bike fatalities were males.

128 quad bike fatalities were reported. None mentioned that rollover protection had been fitted to the quad bike.



From **11 October 2021**, new safety requirements for quad bikes will come into effect. New models must have rollover protection and improved stability, so they'll tip less easily. If you've been thinking about upgrading or buying a new quadbike, you will be able to purchase one with these improved safety features.



Quad bikes aren't always the best option for every job. Always think about the work ahead before choosing a vehicle. A motorbike, side-by-side vehicle or a ute may be a safer choice. And remember, never let children ride adult quad bikes.