

23rd Edition

Comparative Performance Monitoring Report /

Work Health and
Safety Performance

Disclaimer

Safe Work Australia is an Australian Government statutory agency established in 2009. Safe Work Australia includes Members from the Commonwealth, and each state and territory, Members representing the interests of workers and Members representing the interests of employers.

Safe Work Australia works with the Commonwealth, state and territory governments to improve work health and safety and workers' compensation arrangements. Safe Work Australia is a national policy body, not a regulator of work health and safety. The Commonwealth, states and territories have responsibility for regulating and enforcing work health and safety laws in their jurisdiction.

ISSN 2209-9158

Creative Commons

With the exception of the Safe Work Australia logo, this copyright work is licensed under a Creative Commons Attribution 4.0 International licence. To view a copy of this licence, visit creativecommons.org/licenses. In essence, you are free to copy, communicate and adapt the work, even commercially, as long as you attribute the work to Safe Work Australia and abide by the other licence terms.

Contact information

Safe Work Australia | <mailto:info@swa.gov.au> | www.swa.gov.au

Contents

Foreword	6
1. Serious claims	10
1.1 Incidence rate	10
Indicator 1 – Incidence rates of serious injury and disease claims by jurisdiction	11
1.2 Frequency rate	11
Indicator 2 – Frequency rate of serious injury claims by jurisdiction	11
1.3 Long term incidence and frequency rates	12
Indicator 3 – Incidence rates of long term (12 weeks or more compensation) injury and disease claims by jurisdiction	12
Indicator 4 – Frequency rate of long term (12 weeks or more compensation) injury and disease claims by jurisdiction	13
1.4 Self-insured serious claims	13
Indicator 5a – Self-insured claims: number of serious claims by jurisdiction	13
Indicator 5b – Self-insured claims as a proportion of serious claims by jurisdiction (%)	14
2. Duration of absence	14
Indicator 6 – Serious claims: Percentage involving selected periods of compensation (%), 2018–19	15
3. Work-related fatalities	15
3.1 Work-related traumatic injury fatalities	15
Indicator 7a – Traumatic injury worker fatalities: number of incidents not on a public road, by state of death	16
Indicator 7b – Traumatic injury fatalities: incidence rate per 100,000 workers for incidents not on a public road, by state of death	16
3.2 Work-related disease fatalities	16
Indicator 8 – Compensated fatalities involving occupational diseases by jurisdiction	17
4. Claims by size of business (in the private sector)	18
5. Claims by mechanism of incident	18
Indicator 10 – Proportion of serious claims by mechanism of incident	19
5.1 Claims by mechanism of incident and jurisdiction	19
Body stressing	19
Indicator 10a – Proportion of serious claims involving Body stressing by jurisdiction	20
Falls, trips and slips of a person	20
Indicator 10b – Proportion of serious claims involving Falls, trips and slips of a person by jurisdiction	20
Being hit by moving objects	21
Indicator 10c – Proportion of serious claims involving Being hit by moving objects by jurisdiction	21
Hitting objects with a part of the body	21

Indicator 10d – Proportion of serious claims involving Hitting objects with a part of the body by jurisdiction.....	22
Mental stress.....	22
Indicator 10e – Proportion of serious claims involving Mental stress by jurisdiction	22
Other mechanisms.....	23
Indicator 10f – Proportion of serious claims involving Other mechanisms by jurisdiction ...	23
Vehicle incidents.....	23
Indicator 10g – Proportion of serious claims involving Vehicle incidents by jurisdiction.....	24
Heat, electricity and other environmental factors.....	24
Indicator 10h – Proportion of serious claims involving Heat, electricity and other environmental factors by jurisdiction	24
6. Claims by industry.....	25
Indicator 11 – Frequency rates of serious claims by industry	26
6.1 Claims by industry and jurisdiction.....	27
Agriculture, forestry and fishing	27
Indicator 11a – Frequency rates of serious claims for Agriculture, forestry and fishing by jurisdiction.....	27
Mining.....	28
Indicator 11b – Frequency rates of serious claims for Mining by jurisdiction.....	28
Manufacturing	28
Indicator 11c – Frequency rates of serious claims for Manufacturing by jurisdiction	29
Electricity, gas, water and waste services	29
Indicator 11d – Frequency rates of serious claims for Electricity, gas, water and waste services by jurisdiction	29
Construction.....	30
Indicator 11e – Frequency rates of serious claims for Construction by jurisdiction.....	30
Wholesale trade	30
Indicator 11f – Frequency rates of serious claims for Wholesale trade by jurisdiction	31
Retail trade.....	31
Indicator 11g – Frequency rates of serious claims for Retail trade by jurisdiction.....	31
Accommodation and food services.....	32
Indicator 11h – Frequency rates of serious claims for Accommodation and food services by jurisdiction.....	32
Transport, postal and warehousing	32
Indicator 11i – Frequency rates of serious claims for Transport, postal and warehousing by jurisdiction.....	33
Information media and telecommunications	33
Indicator 11j – Frequency rates of serious claims for Information media and telecommunications by jurisdiction.....	33
Financial and insurance services.....	34
Indicator 11k – Frequency rates of serious claims for Financial and insurance services by jurisdiction.....	34

Rental, hiring and real estate services.....	34
Indicator 11l – Frequency rates of serious claims for Rental, hiring and real estate services by jurisdiction.....	35
Professional, scientific and technical services.....	35
Indicator 11m – Frequency rates of serious claims for Professional, scientific and technical services by jurisdiction	35
Administrative and support services	36
Indicator 11n – Frequency rates of serious claims for Administrative and support services by jurisdiction.....	36
Public administration and safety	36
Indicator 11o – Frequency rates of serious claims for Public administration and safety by jurisdiction.....	37
Education and training	37
Indicator 11p – Frequency rates of serious claims for Education and training by jurisdiction	37
Healthcare and social assistance	38
Indicator 11q – Frequency rates of serious claims for Healthcare and social assistance by jurisdiction.....	38
Arts and recreation services	38
Indicator 11r – Frequency rates of serious claims for Arts and recreation services by jurisdiction	39
Other services	39
Indicator 11s – Frequency rates of serious claims for Other services by jurisdiction	39
Appendix 1 — Further information	40
Glossary	40
Time series and adjustment of scheme data	40
Appendix 2 – Jurisdictional contact information.....	42

Foreword

This is the 23rd edition of the Comparative Performance Monitoring (CPM) report which provides trend analyses about work health and safety and workers' compensation schemes operating in Australia and New Zealand.

This report has been compiled and coordinated by Safe Work Australia with assistance from representatives of all work health and safety and workers' compensation authorities in Australia and New Zealand. Through a partnership of governments, employers and employees, Safe Work Australia leads the development of national policy to improve WHS and workers' compensation arrangements across Australia.

The report is presented in the following sections:

- Work health and safety performance – provides an overview of work health and safety performance across Australia and New Zealand through analysing trends in serious claim rates and work-related fatalities across jurisdictions (this section).
- Work health and safety compliance and enforcement activities – includes a jurisdictional comparison of workplace interventions, inspectorate activity, safety notices, enforceable undertakings, legal proceedings and fines.
- Workers' compensation premiums - includes a national and jurisdictional overview of the standardised average premium rates by industry in the past 5 years.
- Entitlements under workers' compensation (scenarios) – illustrates the differences in entitlement levels across jurisdictions under several scenarios.
- Workers' compensation funding – assets, liabilities and expenditure – includes information about the different funding arrangements of the schemes and compares the differences in scheme funding arrangements and finances.
- Workers' compensation disputes – includes information about disputes against an insurer's decision or decisions relating to compensation.

Previous editions of the CPM report also included return to work rates as measured in the National Return to Work Survey. At the time of writing, the latest available survey results were from the 2018 Survey. For trend data on the return to work rates (from 2012 to 2018) please refer to the 22nd edition of the CPM (Part 3). Results from the 2021 National Return to Work Survey will be published on the Safe Work Australia website from late 2021.

Readers may find the Comparison of Workers' Compensation Arrangements in Australia and New Zealand useful as it discusses the way that each scheme deals with key aspects such as coverage, benefits, self-insurance, common law and disputes.

About the data

Data in this publication may differ from jurisdictional annual reports due to the use of different definitions and the application of adjustment factors to aid in the comparability of data.

These statistics should be considered in the broader context of the COVID-19 pandemic when comparing data over previous periods. The potential impact of the COVID-19 pandemic on this data are explored in the COVID-19 and Safe Work Australia data report.

The CPM does not currently include information or data from other industry-specific regulators that have responsibilities with respect to WHS and workers' compensation. These include national industry-based regulators with compliance and enforcement roles such as the National Heavy Vehicle Regulator, the National Rail Safety Regulator and the National Offshore Petroleum Safety and Environmental Management Authority, and other agencies with responsibility for industry-specific compensation claims. Further information on these regulators can be found on their respective websites.

In this report 'Australian Government' is used for indicators relating to WHS and workers' compensation matters under the Australian Government jurisdiction, while 'Comcare' is used for the indicators relating to premium rates and entitlements.

Australian Government employees working in each jurisdiction have been included in Australian Government figures rather than state or territory results. Australian Capital Territory Public Service employees are covered by the Comcare scheme but operate under the work health and safety provisions of the Australian Capital Territory. These employees and their claims have been combined with the Australian Capital Territory private sector employees for reporting outcomes in this section.

Additionally, comparisons of preliminary and non-preliminary data should be made with caution. Non-preliminary data are more likely to have been finalised and are generally more accurate than preliminary data. In this section, comparisons over time have been made with the latest financial year excluded. This is because the data for the latest financial year are preliminary and likely to be revised up in future years as additional claims are made and finalised.

Comparative Performance Monitoring Report

Work Health and Safety Performance

Claims performance

Australia

Serious claim incidence rate has



↓ decreased by 4%

between 2014-15 and 2018-19



The incidence rate was

9.9

serious claims per
1,000 employees

in 2019-20p

New Zealand

Serious claim incidence rate has



↑ Increased by 25%

between 2014-15 and 2018-19



The incidence rate was

15.4

serious claims per
1,000 employees

in 2019-20p

Australian long term claims

Incidence rate of long term claims has

↑ Increased by 12%

between 2014-15 and 2018-19

The incidence rate was



3.6

long term serious claims
per 1,000 employees

in 2019-20p

2018-19 Serious claims with:

less than

6 weeks of
compensation

45% Aus

14% Aus

59% NZ

4% NZ

more than

52 weeks of
compensation



safe work australia

Note:

Data for 2019-20 is preliminary and subject to change when new data is available.
Percentage change statistics exclude the latest financial year as it is still preliminary.

Key findings

Comparative Performance Monitoring Report

/ Work Health and Safety Performance

Self-insured claims in Australia

Highest frequency rate of serious claims in Australia (2019–20p)



Causes of injury in Australia (2019–20p)



safe work australia

Note:

Data for 2019–20 is preliminary and subject to change when new data is available. Percentage change statistics exclude the latest financial year as it is still preliminary.

1. Serious claims

Workers' compensation data is one way to measure work health and safety (WHS) performance. However, the data only covers those eligible for workers' compensation and under-reports the incidence of work-related disease. While there are some limitations, the data still provide a good indication of WHS trends.

The data presented in this section relates to accepted serious workers' compensation claims lodged in each financial year. Common terms used in this section of the report include:

- **serious claims:** claims relating to work-related injury or disease that result in a total absence from work of one working week or more
- **incident rate:** number of serious claims per 1,000 employees
- **frequency rate:** number of claims per one million hours worked, and
- **“p”:** denotes the data is preliminary and subject to revision in future years as claims are finalised.

Jurisdictions supplied the data used in this report for the 2019–20 financial year with updates back to 2014–15. As a result, this publication may contain different figures from previously published data.

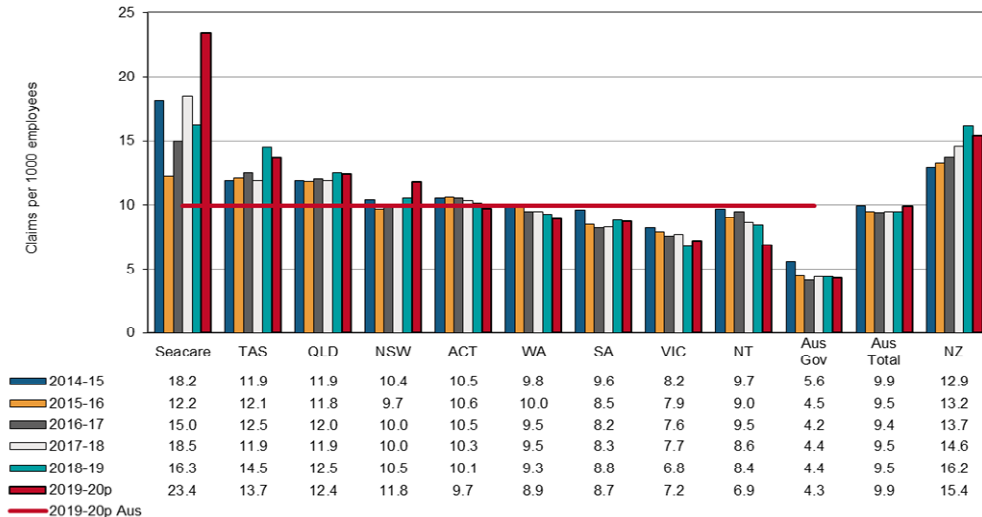
Calculations are based on unrounded data. In addition, the results have been rounded so calculations of percentages (using data shown in tables or figures) may differ to percentages outlined in the text.

1.1 Incidence rate

The overall Australian incidence rate for serious claims (Indicator 1) has remained steady at around 9.5 claims per 1,000 employees for the last four financial years (2015–16 to 2018–19). The preliminary result for 2019–20p shows an increase in the incidence rate (9.9 claims per 1,000 employees). This is likely to rise when updated data become available. Indicator 1 also shows:

- Seacare (23.4 claims per 1,000 employees) recorded the highest incidence rate in 2019–20p, followed by Tasmania (13.7 claims per 1,000 employees). Seacare incident rates have traditionally been much higher than the Australian total rates and the rates of other jurisdictions.
- The Australian Government (4.3 claims per 1,000 employees) and the Northern Territory (6.9 claims per 1,000 employees) both registered the lowest incident rates.
- Between 2014–15 and 2018–19, most Australian jurisdictions recorded a decrease in the incidence rate of serious claims. However, Tasmania (**↑ up 21%**), Queensland (**↑ up 6%**) and New South Wales (**↑ up 1%**) recorded increases during this period. The Australian Government (**↓ down 21%**) reported the largest decrease, followed by Victoria (**↓ down 17%**).
 - In January 2018 the Tasmanian workers' compensation legislation was amended to remove excess payments for employers. This resulted in an expected increase in claims being reported and is reflected in the increase in claim rates for the 2018–19 and subsequent years.
- New Zealand has consistently recorded higher average incident rates compared to Australia. Preliminary results indicate an incident rate for 2019–20p of 15.4 claims per 1,000 employees. From 2014–15 to 2018–19, New Zealand recorded a **25% increase** in the incidence rate of serious claims.

Indicator 1 – Incidence rates of serious injury and disease claims by jurisdiction



1.2 Frequency rate

The overall Australian frequency rate of serious claims (Indicator 2) has been relatively stable in recent years, moving between 5.9 claims per million hours worked in 2014–15 to 5.8 in 2018–19. Preliminary results in 2019–20p shows that the Australian frequency rate of serious claims has increased slightly to 6.1 claims per million hours worked. Indicator 2 also shows:

- Tasmania recorded the highest frequency rate in 2019–20p of 9.3 claims per million hours worked. This was followed by Seacare (8.8 claims per million hours worked).
- The Australian Government recorded the lowest frequency rate in 2019–20p of 2.4 claims per million hours worked.
- Tasmania (**↑ up 23%**), Queensland (**↑ up 9%**) and New South Wales (**↑ up 2%**) all recorded increases in the frequency rate between 2014–15 and 2018–19, whereas the other Australian jurisdictions recorded decreases during this period.
 - In January 2018 the Tasmanian workers' compensation legislation was amended to remove excess payments for employers. This resulted in an expected increase in claims being reported and is reflected in the increase in claim rates for the 2018–19 and subsequent years.
- New Zealand recorded a frequency rate of 8.4 claims per million hours worked in 2019–20p. Between 2014–15 and 2018–19, there was a **26% increase** in the frequency rates recorded.

Indicator 2 – Frequency rate of serious injury claims by jurisdiction



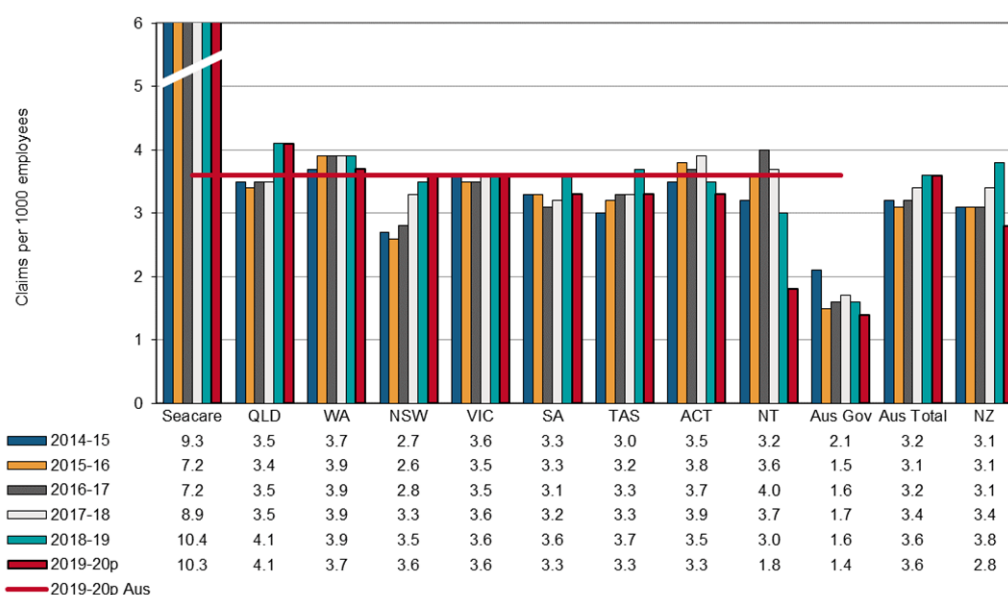
1.3 Long term incidence and frequency rates

The incidence rate of long term (12 weeks or more compensation) injury and disease claims (Indicator 3) in Australia between 2014–15 and 2018–19 has increased in recent years to a rate of 3.6 claims per 1,000 employees.

Preliminary results in 2019–20p shows that the long term incidence rate remains at 3.6 claims per million hours worked. However, this should be treated with caution as claimants with open claims may accrue more time lost or compensation payments in subsequent years. Indicator 3 also shows:

- Most Australian jurisdictions, except for the Australian Government (**↓ down 23%**) and the Northern Territory (**↓ down 6%**), recorded an increase in incidence rates of long term claims over the period from 2014–15 to 2018–19.
- The highest increase was recorded by New South Wales (**↑ up 29%**) over the period.
- New Zealand recorded a **24% increase** over the period, recording a rate of 3.8 claims per 1,000 employees.

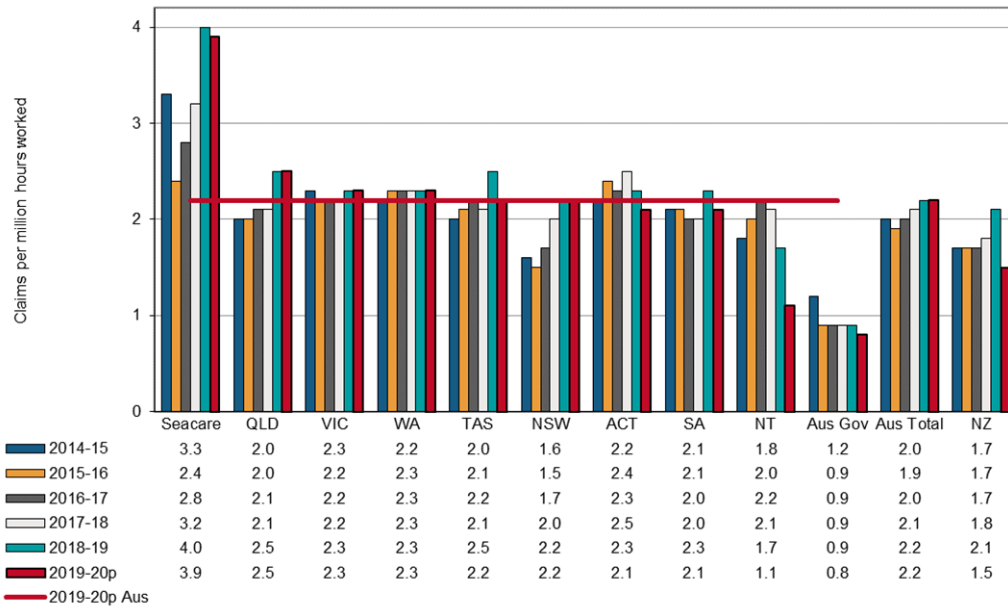
Indicator 3 – Incidence rates of long term (12 weeks or more compensation) injury and disease claims by jurisdiction



The overall Australian frequency rate (Indicator 4) of long term claims has **increased by 14%** between 2014–15 and 2018–19. Preliminary data showed that the Australian frequency rate of long term serious claims increased from 2.0 to 2.2 claims per million hours worked. However, this should be treated with caution as claimants with open claims may accrue more time lost or compensation payments in subsequent years.

- The Australian Government (**↓ down 22%**) and the Northern Territory (**↓ down 1%**) both decreased the frequency rates of long term claims between 2014–15 and 2018–19.
- Over the same period, New South Wales, (**↑ up 32%**), Tasmania (**↑ up 26%**), Queensland (**↑ up 22%**), Seacare (**↑ up 21%**), South Australia (**↑ up 9%**), Western Australia (**↑ up 7%**) and the Australian Capital Territory (**↑ up 2%**) all experienced increases.
- New Zealand's frequency rates of long term claims **increased by 25%** to a rate of 2.1 long term claims per million hours worked in 2018–19.

Indicator 4 – Frequency rate of long term (12 weeks or more compensation) injury and disease claims by jurisdiction



1.4 Self-insured serious claims

Number of self-insured claims

The number of self-insured serious claims in Australia (Indicator 5a) **decreased 3%** between 2014–15 and 2018–19. The preliminary data for Australia show that there were 11,102 self-insured serious claims accepted in 2019–20p.

Indicator 5a also shows:

- Western Australia recorded the largest decrease in self-insured serious claims between 2014–15 and 2018–19 (**down 16%**), followed by the Australian Capital Territory (**down 15%**).
- The Northern Territory recorded the largest increase (**up 33%**).
- The number of self-insured serious claims in New Zealand showed a **31% increase** between 2014–15 and 2018–19.

Indicator 5a – Self-insured claims: number of serious claims by jurisdiction

Year	NSW	SA	QLD	VIC	Aus Gov	WA	TAS*	ACT**	NT	Australian total***	NZ
2014–15	2,578	2,712	1,813	1,432	1,168	979	553	321	180	11,736	5,740
2015–16	2,231	1,989	1,759	1,396	1,005	971	593	312	170	10,426	5,786
2016–17	2,153	1,976	1,691	1,415	1,123	928	626	357	200	10,469	5,860
2017–18	2,275	2,015	1,830	1,478	1,218	866	602	288	199	10,771	6,735
2018–19	2,220	2,337	1,723	1,648	1,378	824	728	272	239	11,369	7,543
2019–20p	2,238	2,227	1,692	1,571	1,407	761	710	287	209	11,102	7,534

*Tasmanian self-insured claims also include state government agencies

**Australian Capital Territory self-insured claims also include the Australian Capital Territory Government.

***The Australian total excludes Seacare self-insured claims.

Proportion of self-insured claims

Preliminary data for 2019–20 show that self-insured claims contributed 9% of serious claims in Australia (Indicator 5b). This indicator also showed:

- The Australian Government had the highest percentage of self-insured claims in 2019–20p, accounting for 77% of their serious claims.
- New South Wales had the lowest proportion of self-insured claims (5% of their serious claims) in 2019–20p.
- Overall, proportion of self-insured claims in Australia decreased (↓ **down 9%**) between 2014–15 and 2018–19, with the largest decreases occurring in Victoria (↓ **down 13%**) and New South Wales (↓ **down 8%**).
- In New Zealand, 25% of serious claims in 2019–20p were recorded by self-insurers. This is over 2.5 times the Australian proportion for the same financial year.

Indicator 5b – Self-insured claims as a proportion of serious claims by jurisdiction (%)

Year	NSW	SA	QLD	VIC	Aus Gov	WA	TAS*	ACT**	NT	Australian total***	NZ
2014–15	7	39	7	6	55	8	21	20	14	11	24
2015–16	7	32	7	6	57	8	22	19	14	10	24
2016–17	6	32	6	6	65	8	23	20	15	10	23
2017–18	6	31	7	6	68	7	22	16	16	10	24
2018–19	6	34	6	8	75	7	22	16	21	10	24
2019–20p	5	34	6	7	77	7	23	17	23	9	25

*Tasmanian self-insured claims also include state government agencies

** Australian Capital Territory self-insured claims also include the Australian Capital Territory Government.

*** The Australian total excludes Seacare self-insured claims.

2. Duration of absence

The duration of absence associated with serious claims provides an indication of the severity of injuries and diseases occurring in Australia. Indicator 6 shows the variation in the percentage of claims involving selected periods of compensation across the jurisdictions. Data are based on claims lodged in 2018–19, which is the most recent year that finalised data is available for this indicator.

Proportion of serious claims

Indicator 6 shows that 45% of claims in Australia resulted in less than six weeks of compensation. The jurisdictional rates ranged between 14% for Seacare to 57% for Tasmania.

- Overall, 14% of all claims across Australia continued for 52 weeks or more.
- Victoria had the highest percentage of claims that continued past 52 weeks of compensation (24% of claims), followed by Seacare (17%).
- Tasmania had the lowest percentage (7%) of claims continuing past 52 weeks of compensation, closely followed by the Northern Territory, Queensland and the Australian Capital Territory (all at 8%).
- In 2018–19, 59% of New Zealand scheme claims resulted in less than six weeks of compensation, and 4% resulted in 52 weeks or more.

Indicator 6 – Serious claims: Percentage involving selected periods of compensation (%), 2018–19

Jurisdiction	less than 6 weeks	6 weeks or more	12 weeks or more	26 weeks or more	52 weeks or more
New South Wales	51	49	34	22	14
Victoria	29	71	53	36	24
Queensland	50	50	33	17	8
South Australia	42	58	41	25	15
Western Australia	42	58	42	25	14
Tasmania	57	43	26	13	7
Northern Territory	46	54	36	18	8
Australian Capital Territory	48	52	35	17	8
Australian Government	48	52	36	20	10
Seacare	14	86	64	36	17
Australian total	45	55	38	23	14
New Zealand	59	41	24	10	4

3. Work-related fatalities

3.1 Work-related traumatic injury fatalities

About Traumatic Injury Fatalities

Data presented in this section are sourced from the Work-related Traumatic Injury Fatality (TIF) data collection. This collection sources information from workers' compensation data, fatality notifications to the various work health and safety authorities and information in the National Coronial Information System (NCIS).

Information presented in Indicator 7a and 7b does not include fatal work-related incidents occurring on a public road. The compensated injury fatalities in the TIF collection are based on date of death and not date of lodgement.

It should be noted that traumatic injury fatality data can be volatile year-on-year. In particular, a single incident resulting in multiple deaths can significantly impact the data in a given year, potentially masking the progress of jurisdictions in reducing or eliminating work-related traumatic injury fatalities in other areas. Further information about the TIF collection and a detailed analysis of the data can be found on the [Safe Work Australia](#) website.

Worker fatalities and incidence rates

There was a **5% decrease** in the number of worker fatalities resulting from incidents not on a public road between 2015–16 and 2019–20.

On average over the five years, New South Wales recorded the highest number of fatalities per year (38 fatalities), followed by Queensland (32 fatalities) and Victoria (28 fatalities).

Indicator 7a – Traumatic injury worker fatalities: number of incidents not on a public road, by state of death

	2015–16	2016–17	2017–18	2018–19	2019–20	5 yr Average
New South Wales	36	41	39	31	45	38
Queensland	34	29	29	38	30	32
Victoria	38	23	24	26	31	28
Western Australia	24	11	13	12	16	15
South Australia	9	13	8	6	4	8
Northern Territory	2	3	5	4	6	4
Tasmania	5	2	3	2	7	4
Australian Capital	0	2	0	1	2	1
Australian total	148	124	121	120	141	131

However, incidence rates over the five year period show that the Northern Territory (3.0 fatalities per 100,000 workers) recorded the highest rate and the Australian Capital Territory (0.4 fatalities per 100,000 workers) recorded the lowest rate (Indicator 7b).

Indicator 7b – Traumatic injury fatalities: incidence rate per 100,000 workers for incidents not on a public road, by state of death

	2015–16	2016–17	2017–18	2018–19	2019–20	5 yr Average
New South Wales	1.0	1.1	1.0	0.8	1.1	1.0
Queensland	1.4	1.2	1.2	1.5	1.2	1.3
Victoria	1.3	0.7	0.7	0.8	0.9	0.9
Western Australia	1.8	0.8	1.0	0.9	1.2	1.1
South Australia	1.1	1.6	1.0	0.7	0.5	1.0
Northern Territory	1.5	2.2	3.6	3.0	4.6	3.0
Tasmania	2.1	0.8	1.2	0.8	2.8	1.5
Australian Capital	0.0	0.9	0.0	0.4	0.9	0.4
Australian total	1.2	1.0	1.0	0.9	1.1	1.1

3.2 Work-related disease fatalities

Workers' compensation data contains some information on disease-related fatalities, but this data is known to understate the number of fatalities from work-related diseases. It can be difficult to associate a disease that becomes evident later in life after exposure to a chemical or substance that occurred many years earlier while at work. Some occupational diseases such as asbestosis and mesothelioma are also compensated through separate mechanisms, while many other diseases go unreported and/or uncompensated.

Compensation claims for disease fatalities

Indicator 8 shows that in 2019–20p there were 52 accepted workers' compensation claims for work-related fatalities involving an occupational disease in Australia. The above number is expected to rise as more claims lodged in 2019–20 are accepted.

There was a substantial decrease (↓ **down 20%**) in the number of compensated fatalities related to occupational diseases in Australia from 2014–15 to 2018–19.

Fatalities recorded in the National Dataset for Compensation-based Statistics are recorded against the date of death. Data revisions from previous years may occur due to time lags between lodgement of the claim, acceptance and/or the date of death (e.g. when there is time between diagnosis leading to a claim being lodged and the date of death).

The Australian Mesothelioma Registry reports annually on mesothelioma incidence which is available on its [reports and publications webpage](#).

Indicator 8 – Compensated fatalities involving occupational diseases by jurisdiction

Jurisdiction	2014–15	2015–16	2016–17	2017–18	2018–19	2019–20p	5yr Average*
Queensland**	23	14	15	18	23	15	19
Australian Government	14	15	23	19	13	4	17
Victoria	21	25	11	12	6	18	15
New South Wales	14	14	9	9	13	10	12
South Australia	6	8	5	5	3	2	5
Western Australia	2	5	3	4	5	1	4
Tasmania	1	1	0	2	1	1	1
Australian Capital Territory	1	1	1	0	1	0	1
Northern Territory	0	0	0	1	1	1	<1
Seacare	0	1	0	1	0	0	<1
Australian total	82	84	67	71	66	52	74
New Zealand	45	31	43	41	30	23	38

* The five year total includes compensated fatalities between 2014–15 to 2018–19.

** The majority of compensated fatalities for occupational diseases in Queensland and the Australian Government are due to mesothelioma or asbestosis. Queensland compensates more of these fatalities through its scheme than is the case in other jurisdictions where compensation is more often sought through separate mechanisms including common law.

4. Claims by size of business (in the private sector)

Indicator 9 compares the incidence of serious workers' compensation claims by size of business. During the collation and analysis of this edition of the Comparative Performance Monitoring Report, concerns were identified with the methodology for calculating this indicator, particularly given volatility in the labour force due to the COVID-19 pandemic and significant changes in the structure of businesses since the methodology for this indicator was last reviewed. As a result, Safe Work Australia has decided to exclude this indicator for the 23rd edition and will review this further before the release of the next edition of the Comparative Performance Monitoring report.

5. Claims by mechanism of incident

Claim patterns can be analysed using the Type of Occurrence Classification System (TOOCS), which contains a series of codes providing information on the cause of the incident and the type of injury or disease. Coding for the mechanism of incident is intended to identify the overall action, exposure or event that best describes the circumstances that resulted in the most serious injury or disease. More information on TOOCS can be found on the [Safe Work Australia](#) website.

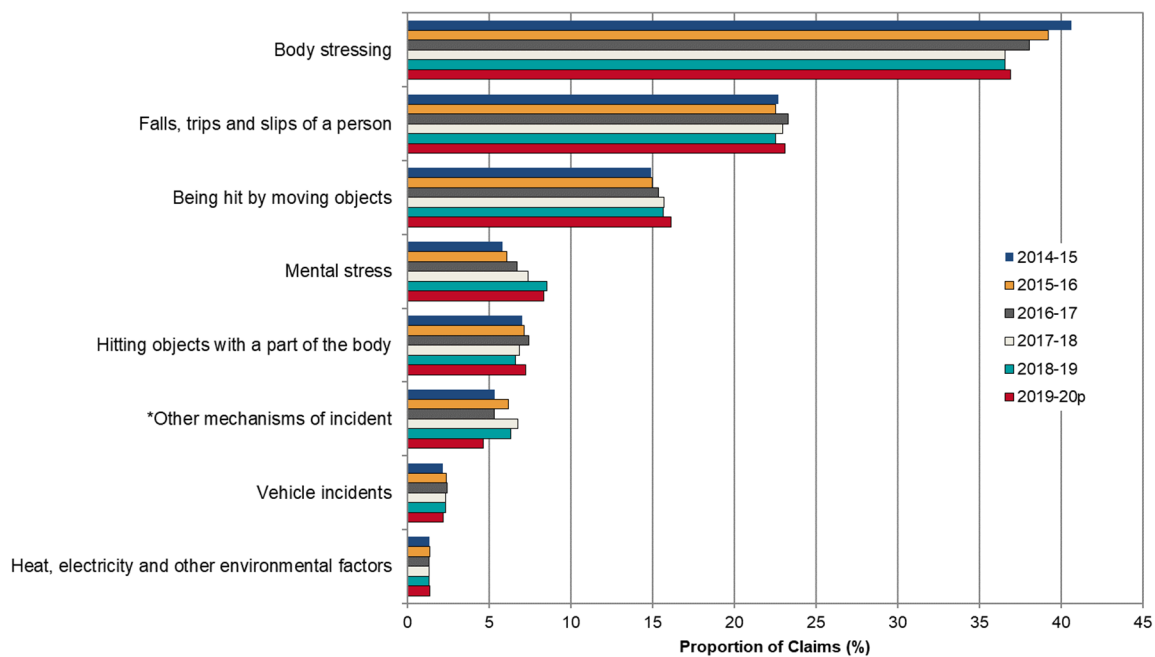
The Agency also provides further information on the claims by mechanism of incident in the *Australian Workers' Compensation Statistics report*, published on the [Safe Work Australia](#) website

Proportion of serious claims (Australia)

Indicator 10 shows the proportion of serious claims by the mechanism of incident over the past 6 financial years.

- Body stressing accounted for 36.9% of the 120,355 serious claims in 2019–20p (44,420 claims).
- This was followed by Falls, slips and trips of a person which accounted for 23.1% of claims (27,820 claims).
- Mental stress accounted for 8.4% of claims in 2019–20p (10,085 claims).
- Body stressing (↓ **down 10%**) showed the highest reduction in claims between the period 2014–15 and 2018–19.
- However, Mental stress claims **increased by 46%** during the same reference period.

Indicator 10 – Proportion of serious claims by mechanism of incident



* Other mechanisms of incident include Chemicals and other substances, Biological factors, Sound and pressure, Other multiple mechanisms of incident, Roll over, Slide or cave-in and Unspecified mechanisms of incident.

5.1 Claims by mechanism of incident and jurisdiction

This section presents a comparison of the proportion of serious claims across the Australian jurisdictions for each of the 8 different mechanism of incident groups. Due to the differences in the total number of serious claims across jurisdictions, proportions are a better measure for direct comparison between jurisdictions. The industry and occupation composition of each jurisdiction can influence the proportion of claims due to different mechanisms. This may explain some of the differences between jurisdictions.

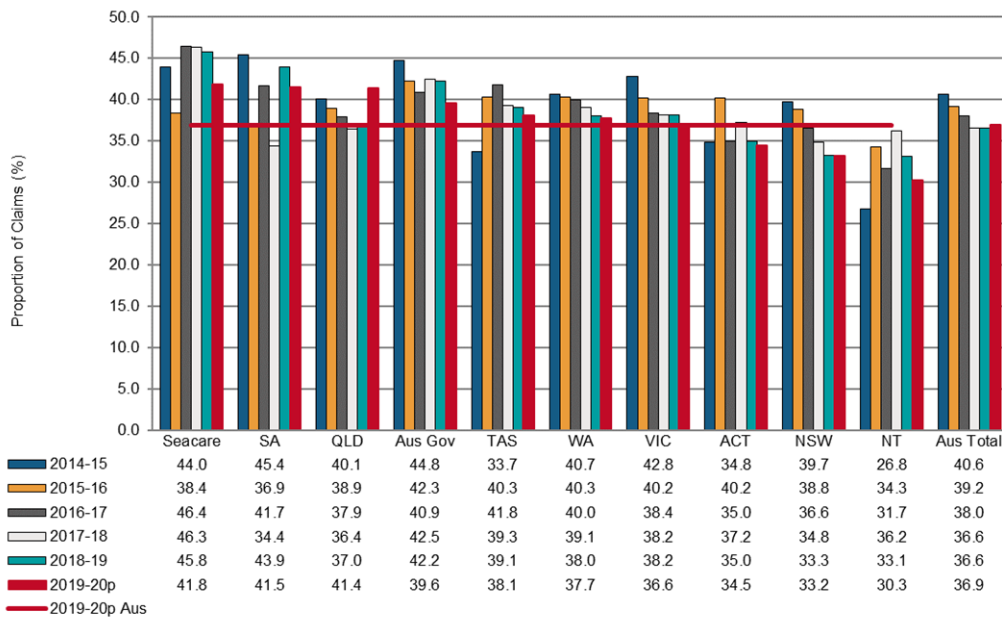
Body stressing

Body stressing was the leading mechanism of incident for serious claims between 2014–15 and 2019–20p, accounting for 36.9% of the total serious claims in 2019–20p (Indicator 10a).

In 2019–20p:

- Seacare had the highest proportion of claims (41.8%) due to this mechanism, followed by South Australia (41.5%) and Queensland (41.4%).
- The Northern Territory had the lowest proportion of claims (30.3%).

Indicator 10a – Proportion of serious claims involving Body stressing by jurisdiction

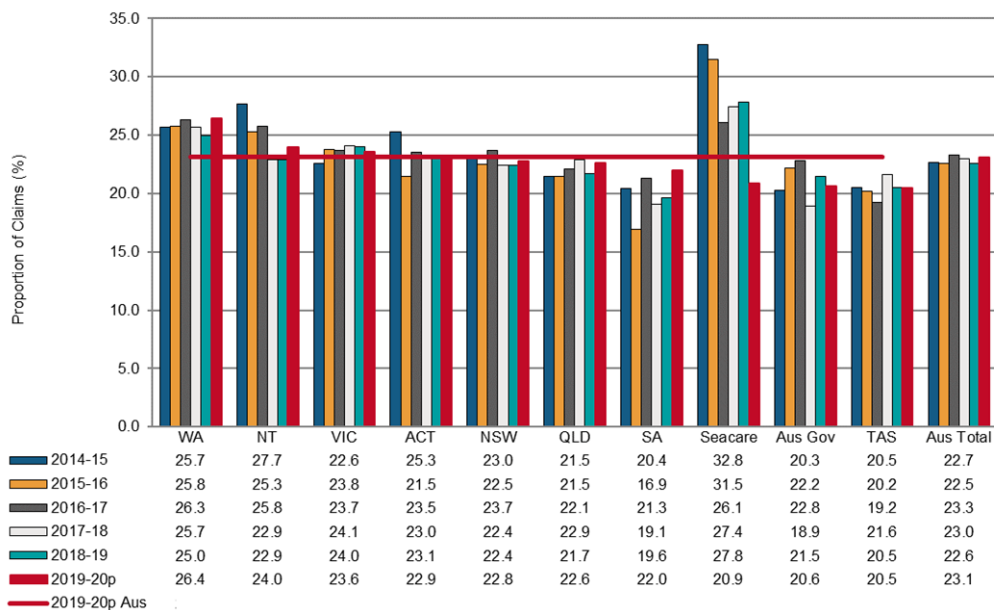


Falls, trips and slips of a person

Falls, trips and slips of a person accounted for 23.1% of serious claims in Australia in 2019–20p. This mechanism of incident was the second leading cause of serious claims across jurisdictions. In 2019–20p:

- Western Australia recorded the highest proportion of claims (26.4%) due to this mechanism, followed by the Northern Territory (24.0%).
- Tasmania recorded the lowest proportion of claims (20.5%).

Indicator 10b – Proportion of serious claims involving Falls, trips and slips of a person by jurisdiction

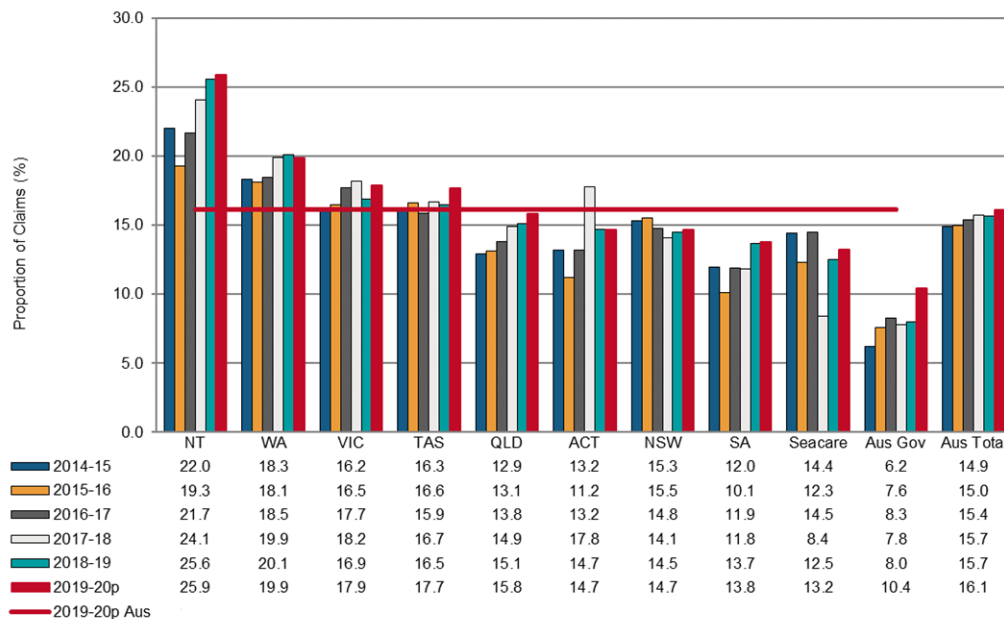


Being hit by moving objects

In 2019–20p Being hit by moving objects accounted for 16.1% of serious claims (Indicator 10c). In 2019–20p:

- The Northern Territory had the highest proportion of serious claims (25.9%) due to this mechanism, followed by Western Australia (19.9%).
- The Australian Government had the lowest proportion (10.4%).

Indicator 10c – Proportion of serious claims involving Being hit by moving objects by jurisdiction

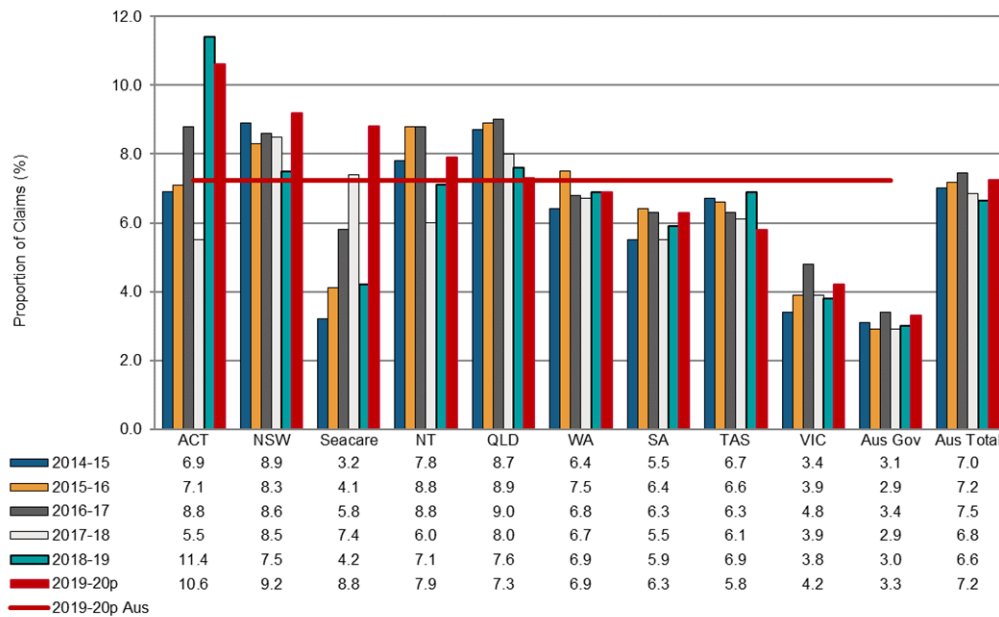


Hitting objects with a part of the body

The mechanism of Hitting objects with a part of the body includes incidents where the motion of a person results in hitting (including bumping, cutting, striking, grasping etc.) stationary and/or moving objects (including machines, vehicles, equipment, tools etc.). Nationally, 6.7% of claims were due to this mechanism 2019–20p. Indicator 10d shows that in 2019–20p:

- The Australian Capital Territory recorded the highest proportion of serious claims due to this mechanism (10.6%), followed by New South Wales (9.2%).
- The Australian Government recorded the lowest proportion of claims (3.3%).

Indicator 10d – Proportion of serious claims involving Hitting objects with a part of the body by jurisdiction



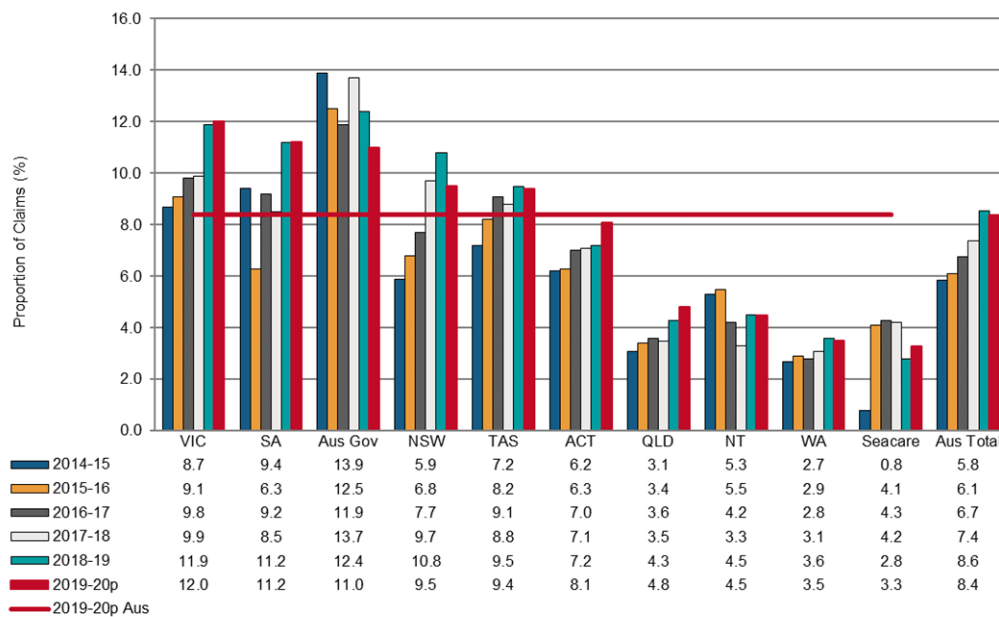
Mental stress

Indicator 10e shows the proportion of serious claims due to Mental stress in Australia increased from 5.8% in 2014–15 to 8.6% in 2018–19. In 2019–20p:

- Victoria had the highest proportion of Mental stress claims (12.0%).
- Seacare recorded the lowest proportion of Mental stress claims in the same year (3.3%). However, this has increased from 0.8% in 2014–15.

New South Wales (**↑ up 83%**), Queensland (**↑ up 39%**), Victoria (**↑ up 37%**), Western Australia (**↑ up 33%**) and Tasmania (**↑ up 32%**) all recorded notable increases in the proportion of Mental stress claims between 2014–15 and 2018–19.

Indicator 10e – Proportion of serious claims involving Mental stress by jurisdiction



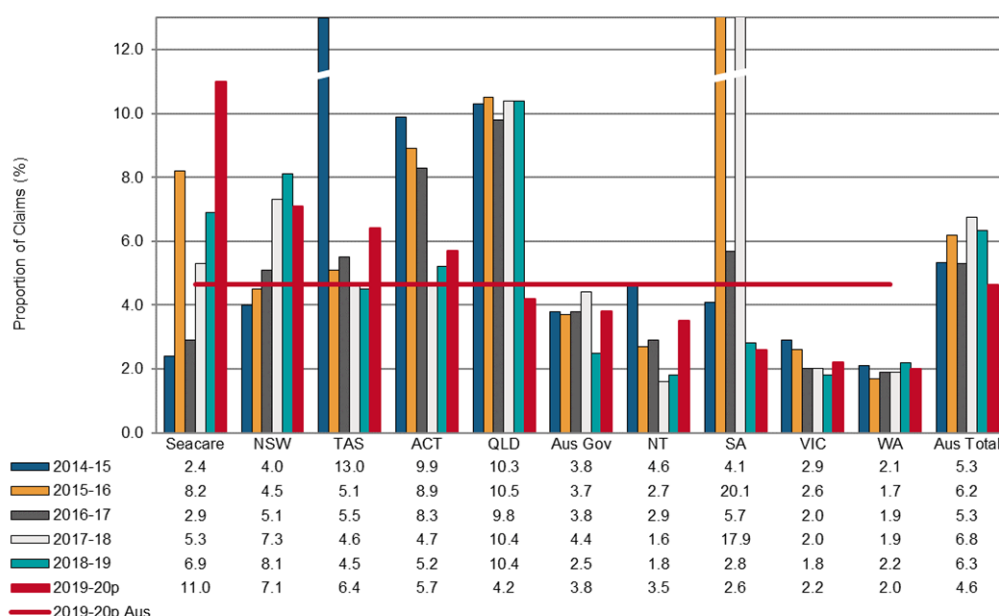
Other mechanisms

This category includes Biological factors, Chemicals and other substances, Sound and pressure, Other multiple mechanisms of incidents, Rollover, slide or cave-in and Unspecified mechanisms.

Overall, 4.6% of serious claims across Australia in 2019–20p were due to these mechanisms. Indicator 10f shows in 2019–20p:

- Seacare had the highest proportion of claims (11.0%) for these mechanisms, followed by New South Wales (7.1%).
 - Seacare and New South Wales also recorded large increases in the proportion of serious claims due to these mechanisms between 2014–15 and 2018–19. These substantial changes in proportions can be related to the fluctuations in the number of serious claims coded to “Unspecified mechanisms of incident” in these years and may therefore reflect issues with coding rather than significant increases or decreases in serious claims related to the specific issues noted above.
- Western Australia recorded the lowest proportion of claims (2.0%) for these mechanisms.

Indicator 10f – Proportion of serious claims involving Other mechanisms by jurisdiction



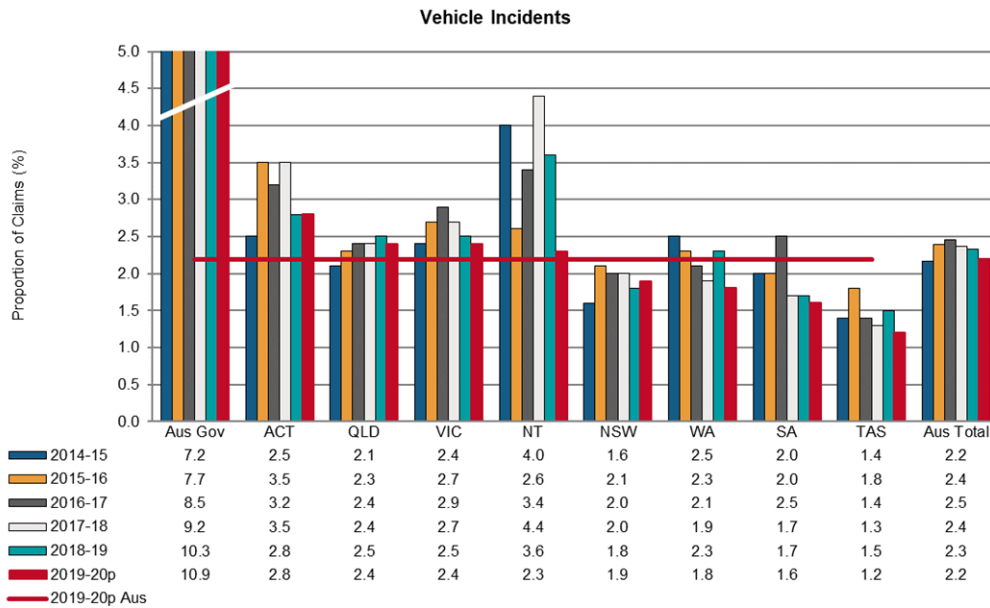
Vehicle incidents

In 2019–20p, Indicator 10g shows that 2.2% of all serious claims across Australian jurisdictions were due to Vehicle incidents. Serious claims due to vehicle incidents cover all claims lodged and accepted for compensation where a vehicle collision was involved, leading to the injuries.

In 2019–20p:

- The Australian Government recorded the highest proportion of serious claims (10.9%) due to this mechanism, which was five times the Australian average. This may, in part, be explained by the composition of this jurisdiction leading to lower proportions of claims for other mechanisms.
- Tasmania had the lowest proportion of claims (1.2%).

Indicator 10g – Proportion of serious claims involving Vehicle incidents by jurisdiction

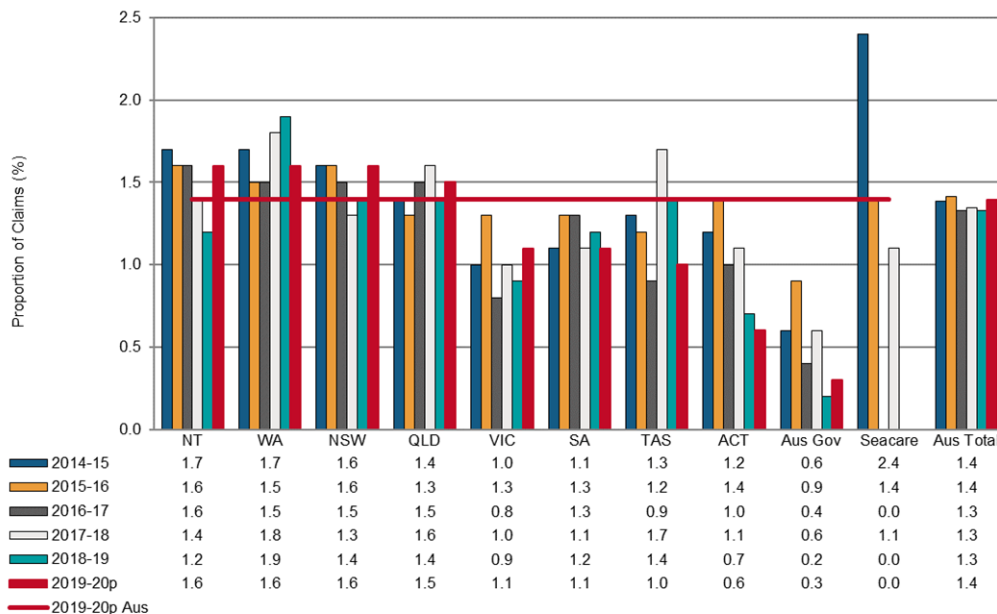


Heat, electricity and other environmental factors

Of all the mechanisms of incident, claims associated with Heat, electricity and other environmental factors accounted for the lowest proportion (1.4%) of serious claims in 2019–20p (Indicator 10h). The proportion of claims has been relatively stable since 2014–15. In 2019–20p:

- The Northern Territory, Western Australia and New South Wales all had the highest proportion of claims (1.6% each) due to this mechanism.
- The lowest proportion was reported by the Australian Government (0.3%).
- Seacare did not record any serious claims associated with this mechanism of incident.

Indicator 10h – Proportion of serious claims involving Heat, electricity and other environmental factors by jurisdiction



6. Claims by industry

Frequency rates use

Frequency rates have been used in this section to express the number of serious claims per million hours worked in each industry.

This report differs from previous editions of the CPM, which used incidence rates (number of serious claims per 1,000 employees) to measure the rates of serious claims by jurisdiction and industry. This edition uses the frequency rate (the number of serious claims per one million hours worked) as it is a more accurate measure of work health and safety. There are significant differences in the number of hours worked by different groups of employees and employees at different points in time. These differences in the number of hours worked mean that employees' exposure to work related risks vary considerably. A frequency rate accounts for these differences and allows more accurate comparisons between jurisdictions and industries.

In addition, in 2019-20p, Australia experienced large changes in the economic landscape due to the effects of COVID-19. This affected many aspects of work including attendance at the usual workplace, work hours and employment levels.

Frequency rates data

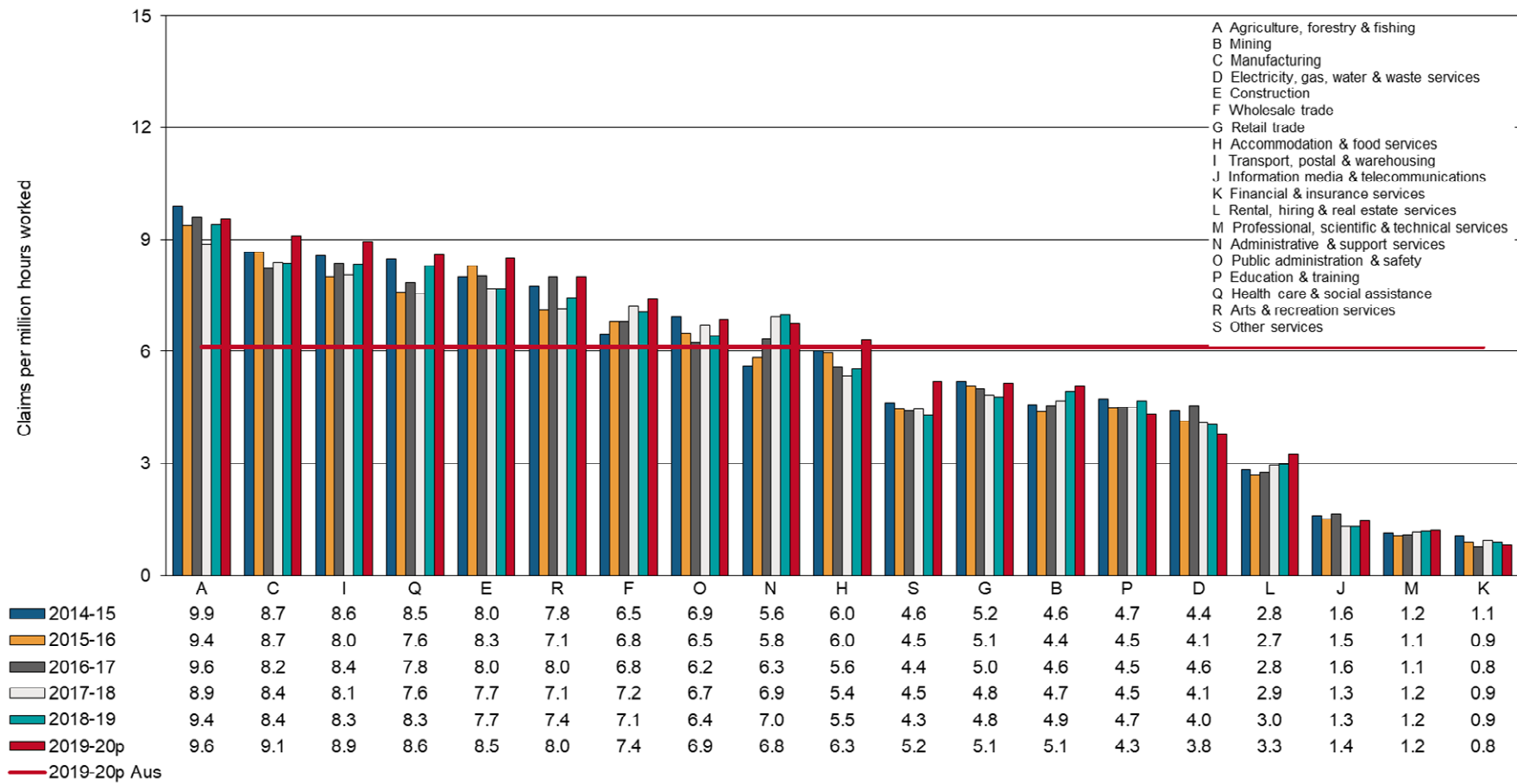
Preliminary data in Indicator 11 shows that in 2019–20p, the Agriculture, forestry and fishing industry recorded the highest frequency rate with 9.6 serious claims per million hours worked. This was followed by the Manufacturing (9.1), Transport, postal and warehousing (8.9), Health care and social assistance (8.6) and Construction (8.5) industries. Under the *Australian Work Health and Safety Strategy 2012–2022* these industries together with Accommodation and food services and Public administration and safety, have been identified as national priorities for prevention activities.

All industries recorded decreases in the frequency rate of serious claims between 2014–15 and 2018–19 except for Administrative and support services (**↑ up 25%**), Wholesale trade (**↑ up 9%**), Mining (**↑ up 8%**), Rental, hiring and real estate services (**↑ up 5%**) and Professional, scientific and technical services (**↑ up 4%**).

The highest reductions in frequency rates were in Information media and telecommunications (**↓ down 18%**), Financial and insurance services (**↓ down 15%**), Electricity, gas, water and waste services (**↓ down 9%**), Accommodation and food services (**↓ down 8%**) and Retail trade (**↓ down 8%**) industries.

More detailed information on claims by industry can be found in the *Australian Workers' Compensation Statistics report*, published on the [Safe Work Australia](#) website.

Indicator 9 – Frequency rates of serious claims by industry



6.1 Claims by industry and jurisdiction

This section contains supplementary information to Indicator 11. Indicators 11a to 11s provide a comparison of the frequency rates of serious claims across the Australian jurisdictions for 19 industries.

Caution should be used when interpreting these results

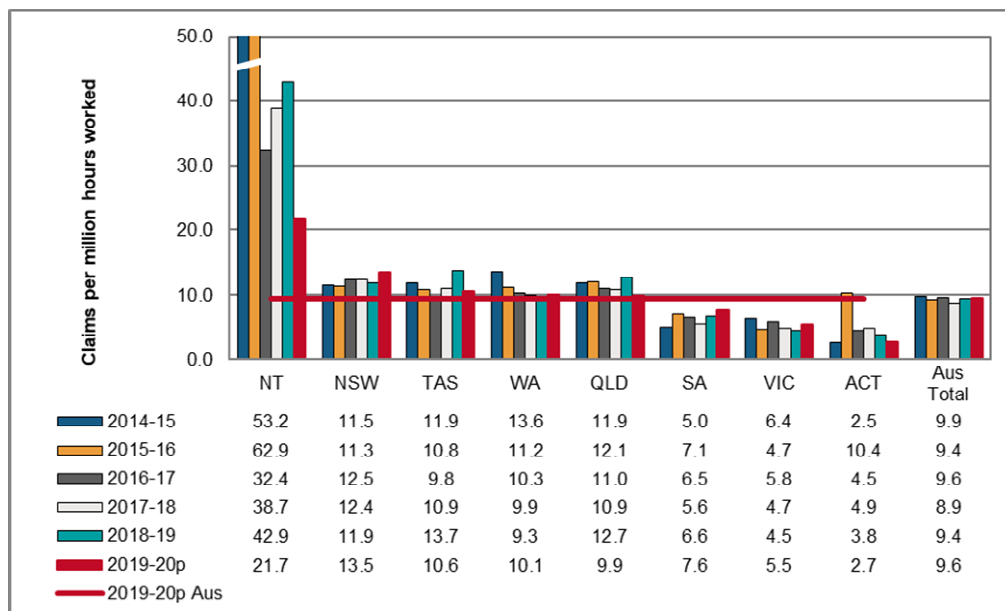
Frequency rates in some industries at the jurisdictional level can be volatile and should be treated with caution. As the number of employees used in calculating frequency rates are estimated from survey samples, readers should be aware that the relative standard errors for estimating the number of employees will be higher with smaller sample sizes (e.g. smaller jurisdictions). Jurisdictions are not included in the respective charts and analysis where the relative standard error is greater than 50%.

The number of workers employed in each state and territory vary greatly and therefore are liable to show volatility in smaller jurisdictions such as the Northern Territory which employs fewer workers, even when the variations are small.

Agriculture, forestry and fishing

- The Australian frequency rate in 2019–20p for this industry was 9.6 claims per million hours worked.
- The Northern Territory recorded the highest rate (21.7 claims per million hours worked).
- The Australian Capital Territory (2.7 claims per million hours worked) recorded the lowest rate. However, between 2014–15 and 2018–19, this jurisdiction recorded the largest increase in frequency rates (**↑ up 50%**) in this industry.
- Between 2014–15 and 2018–19, Western Australia recorded the highest decrease in frequency rates (**↓ down 32%**). This was closely followed by Victoria (**↓ down 31%**).

Indicator 11a – Frequency rates of serious claims for Agriculture, forestry and fishing by jurisdiction

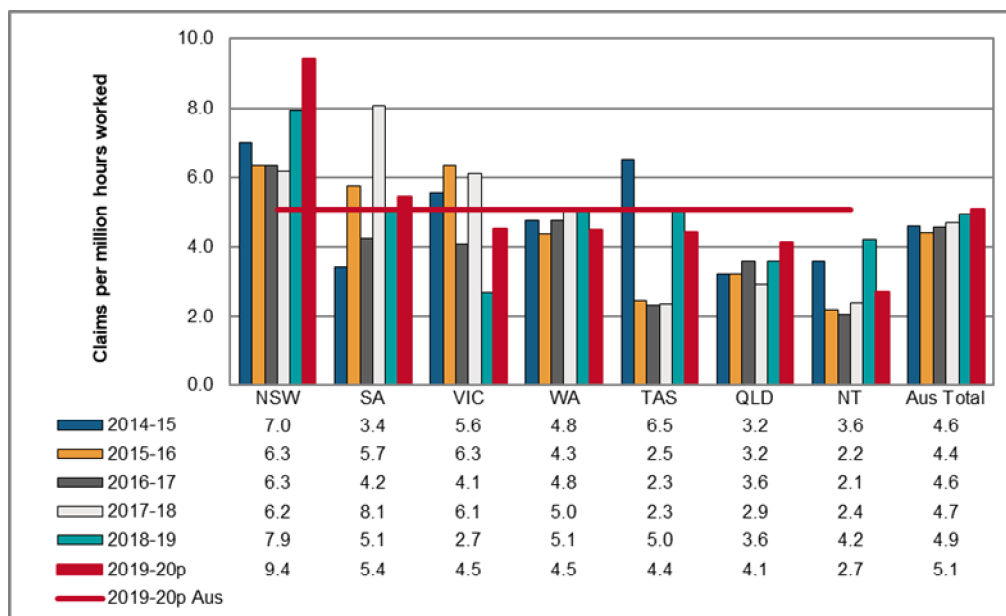


Mining

- The Australian frequency rate in 2019–20p for the Mining industry was 5.1 claims per million hours worked.
- New South Wales (9.4 claims per million hours worked) recorded the highest frequency rate while Northern Territory (2.7 claims per million hours worked) recorded the lowest.
- Except for Victoria (↓ **down 52%**) and Tasmania (↓ **down 24%**), all jurisdictions recorded an increase in their frequency rates between 2014–15 and 2018–19. South Australia (↑ **up 50%**) recorded the largest increase.

The frequency rates of the Australian Capital Territory were not reported here due to the high relative standard error.

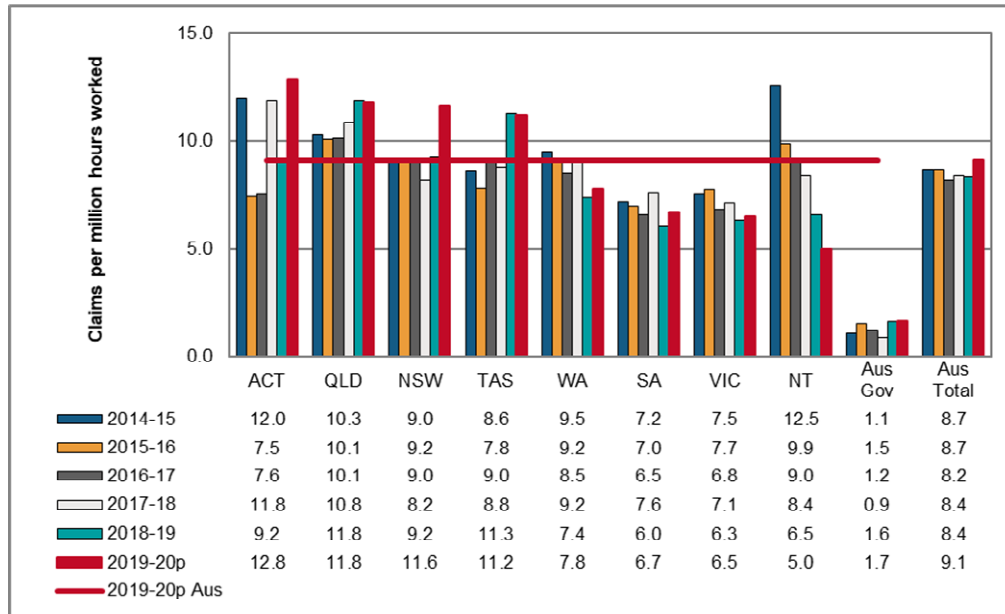
Indicator 11b – Frequency rates of serious claims for Mining by jurisdiction



Manufacturing

- The Australian frequency rate in 2019–20p for the Manufacturing industry was 9.1 claims per million hours worked.
- The Australian Capital Territory (12.8 claims per million hours worked) recorded the highest rate while the Australian Government (1.7 claims per million hours worked) recorded the lowest.
- Overall, the industry recorded a decrease in frequency rates (↓ **down 4%**) between 2014–15 and 2018–19. Four out of 9 jurisdictions recorded an increase, with the Australian Government recording the largest increase (↑ **up 49%**). The remaining 5 jurisdictions recorded decreases, with the Northern Territory recording the largest decrease (↓ **down 48%**).

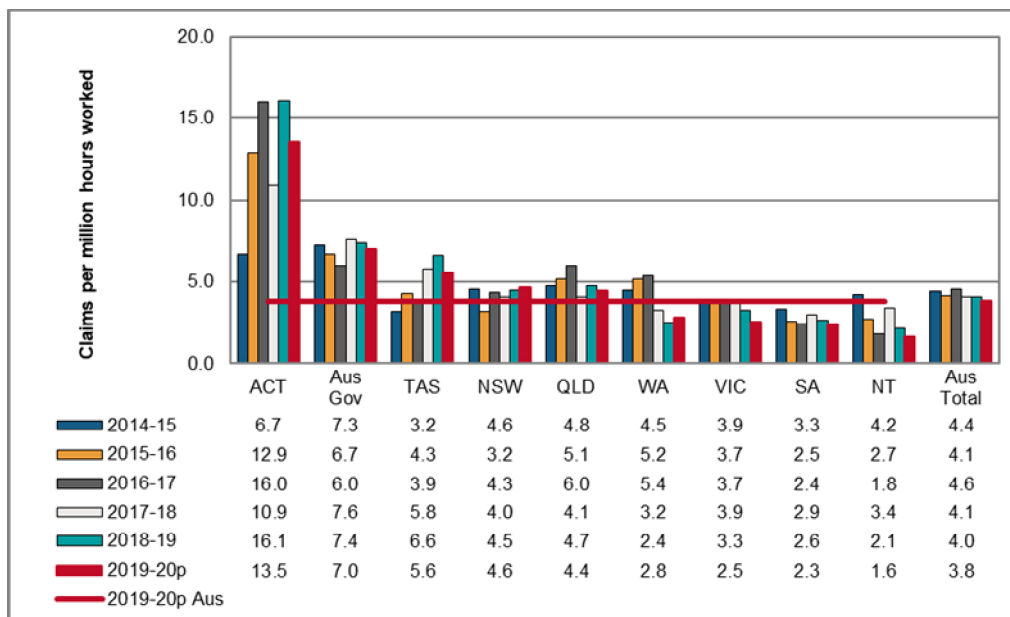
Indicator 11c – Frequency rates of serious claims for Manufacturing by jurisdiction



Electricity, gas, water and waste services

- In 2019–20p, the Australian frequency rate in this industry was 3.8 claims per million hours worked.
- The Australian Capital Territory (13.5 claims per million hours worked) recorded the highest rate while the Northern Territory (1.6 claims per million hours worked) recorded the lowest.
- Between 2014–15 and 2018–19, the overall frequency rates of this industry **decreased by 9%**, with 5 out of 9 jurisdictions recording decreases. The largest decrease was recorded by the Northern Territory (**↓ down 49%**), followed by Western Australia (**↓ down 45%**).
- The Australian Capital Territory and Tasmania both recorded large increases in their frequency rates. The Australian Capital Territory increased from 6.7 claims per million hours worked to 16.1 and Tasmania increased their rate from 3.2 claims per million hours worked to 6.6.

Indicator 11d – Frequency rates of serious claims for Electricity, gas, water and waste services by jurisdiction



Construction

- In 2019–20p, the Australian frequency rate for the Construction industry recorded 8.5 claims per million hours worked.
- Tasmania (14.3 claims per million hours worked) recorded the highest rate while the Australian Government (4.3 claims per million hours worked) recorded the lowest in 2019–20p.
- Between 2014–15 and 2018–19, 6 out of 9 jurisdictions recorded decreases in their frequency rates. The Australian Government recorded the largest decrease (**↓ down 48%**), followed by Victoria (**↓ down 18%**). Tasmania recorded the largest increase (**↑ up 33%**).
- Overall, the Australian frequency rate for this industry **decreased by 4%**.

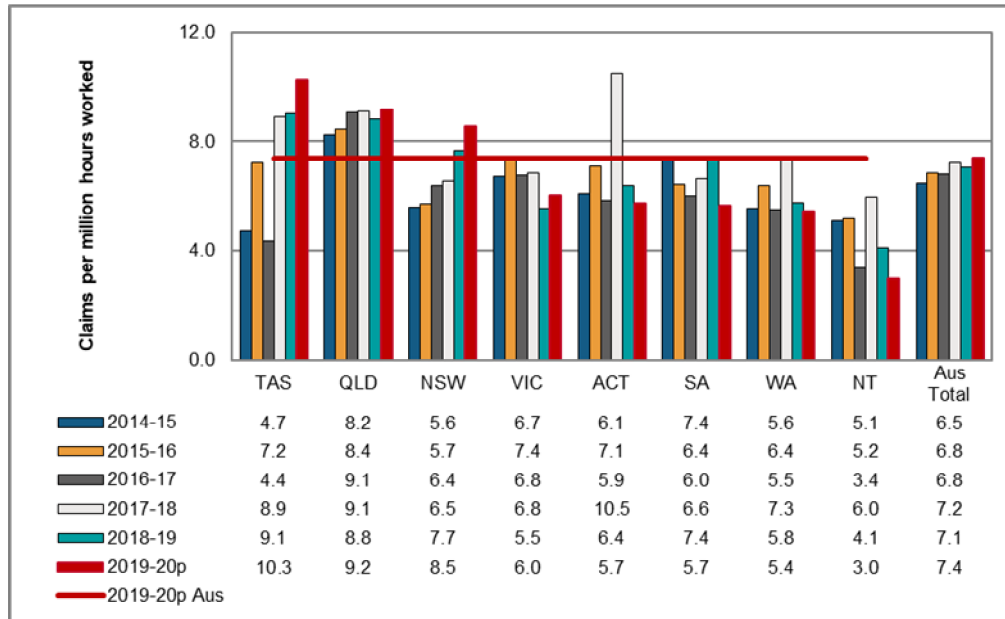
Indicator 11e – Frequency rates of serious claims for Construction by jurisdiction



Wholesale trade

- The Australian frequency rate for this industry in 2019–20p was 7.4 claims per million hours worked. Between 2014–15 and 2018–19 the Australian frequency rate for this industry **decreased by 9%**.
- Tasmania (10.3 claims per million hours worked) recorded the highest rate while the Northern Territory (3.0 claims per million hours worked) recorded the lowest in 2019–20p.
- Two out of 8 jurisdictions recorded decreases in their frequency rate between 2014–15 and 2018–19. The Northern Territory recorded a **20% decrease** and Victoria recorded a **18% decrease**. Tasmania recorded the largest increase (**↑ up 92%**).

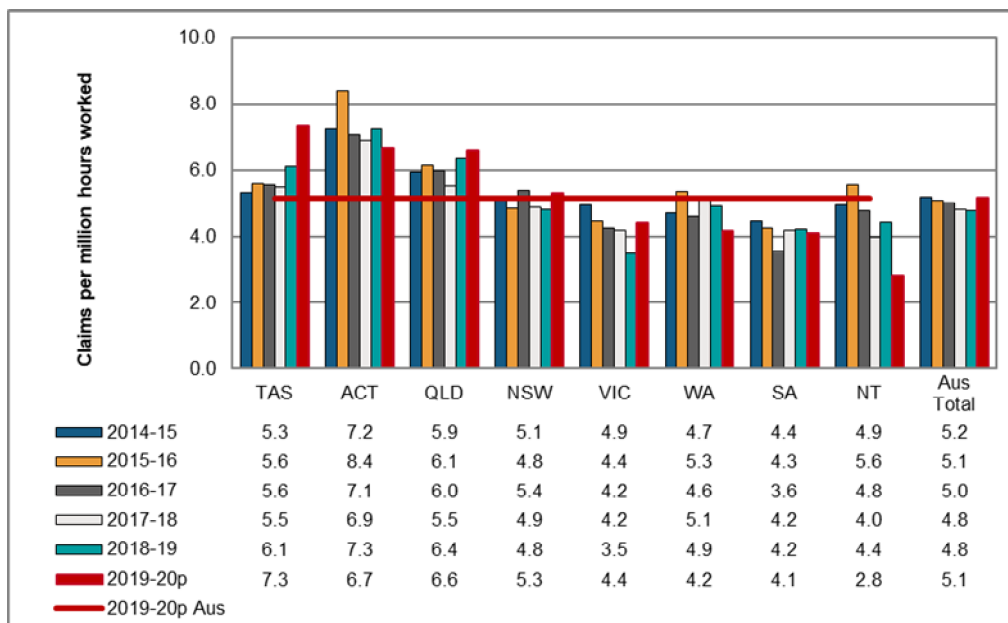
Indicator 11f – Frequency rates of serious claims for Wholesale trade by jurisdiction



Retail trade

- The 2019–20p Australian frequency rate in the Retail trade industry was 5.1 claims per million hours worked.
- Tasmania recorded the highest frequency rate in this industry in 2019–20p (7.3 claims per million hours worked) while the Northern Territory recorded the lowest (2.8 claims per million hours worked).
- The Australian frequency rate of claims in the Retail trade industry **decreased by 8%** between 2014–15 and 2018–19. Victoria recorded the largest decrease (**↓ down 29%**), followed by the Northern Territory (**↓ down 11%**).
- Over the same period, 3 out of 8 industries recorded increases. Tasmania recorded the largest increase (**↑ up 15%**) followed by Queensland (**↑ up 7%**) and Western Australia (**↑ up 4%**).

Indicator 11g – Frequency rates of serious claims for Retail trade by jurisdiction

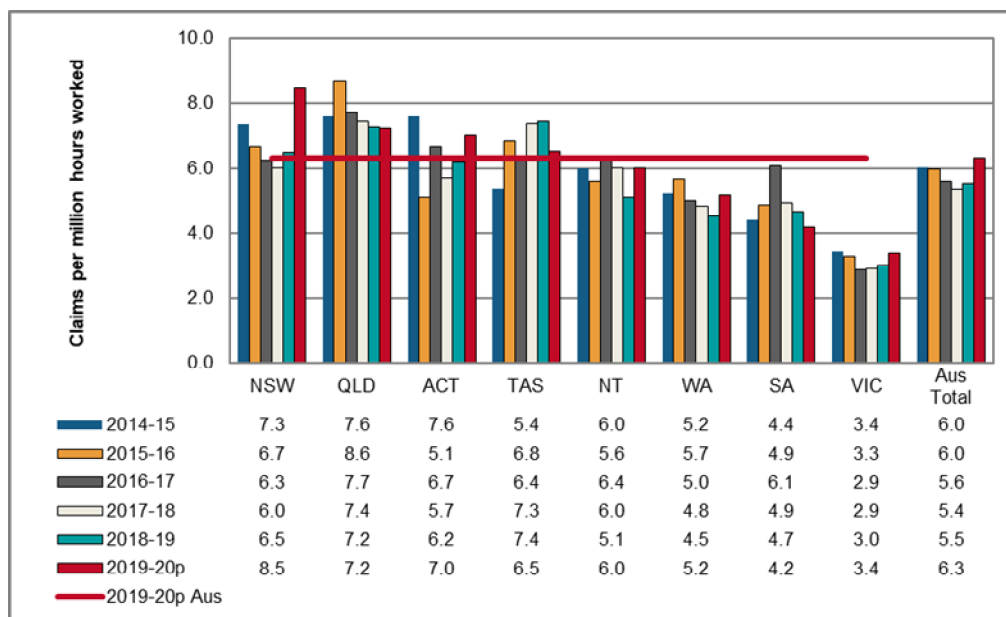


Accommodation and food services

- The Australian frequency rate for this industry was 6.3 claims per million hours worked in 2019–20p.
- New South Wales (8.5 claims per million hours worked) recorded the highest frequency rate in 2019–20p. Victoria (3.4 claims per million hours worked) was the lowest.
- Between 2014–15 and 2018–19, 6 jurisdictions recorded decreases in their frequency rates. The Australian Capital Territory (**↓ down 18%**) recorded the largest decrease. Tasmania (**↑ up 38%**) and South Australia (**↑ up 6%**) were the only jurisdictions to record an increase.

The frequency rates for the Australian Government were not reported as it only had a small number of reportable claims in 2015–16 and 2018–19.

Indicator 11h – Frequency rates of serious claims for Accommodation and food services by jurisdiction

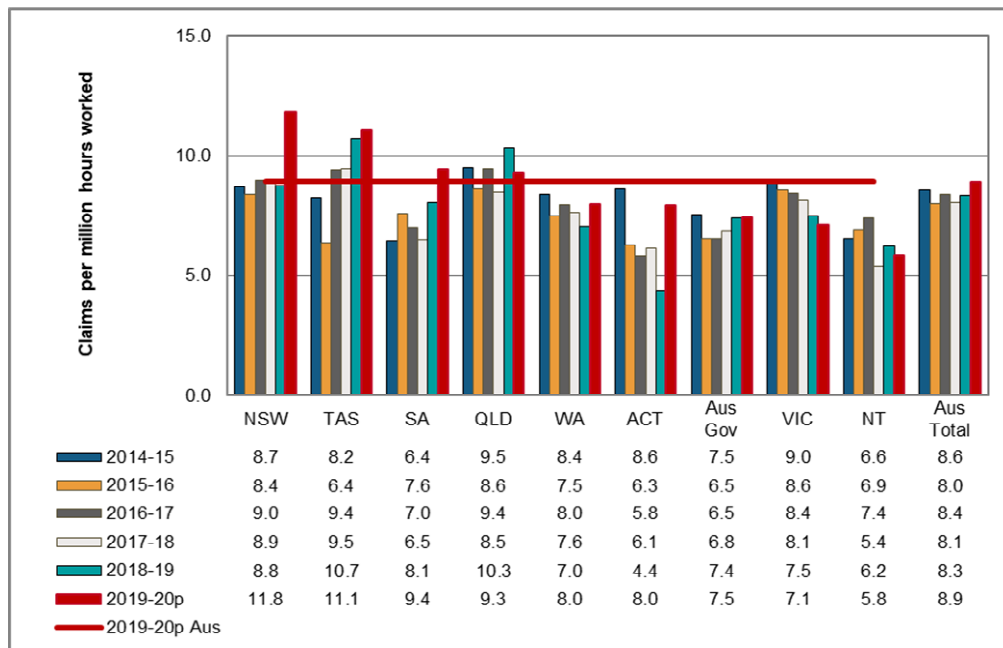


Transport, postal and warehousing

- The Australian frequency rate for this industry was 8.9 claims per million hours worked in 2019–20p.
- In 2019–20p, New South Wales recorded the highest frequency rate (11.8 claims per million hours worked) and the Northern Territory recorded the lowest (5.8 claims per million hours worked)
- The Australian frequency rate for this industry **decreased by 3%** between 2014–15 and 2018–19. The largest increase during this period was recorded by Tasmania (**↑ up 30%**), followed by South Australia (**↑ up 26%**). The largest decrease was recorded by the Australian Capital Territory (**↓ down 49%**).

The frequency rates of Seacare were not reported here due to the high relative standard error.

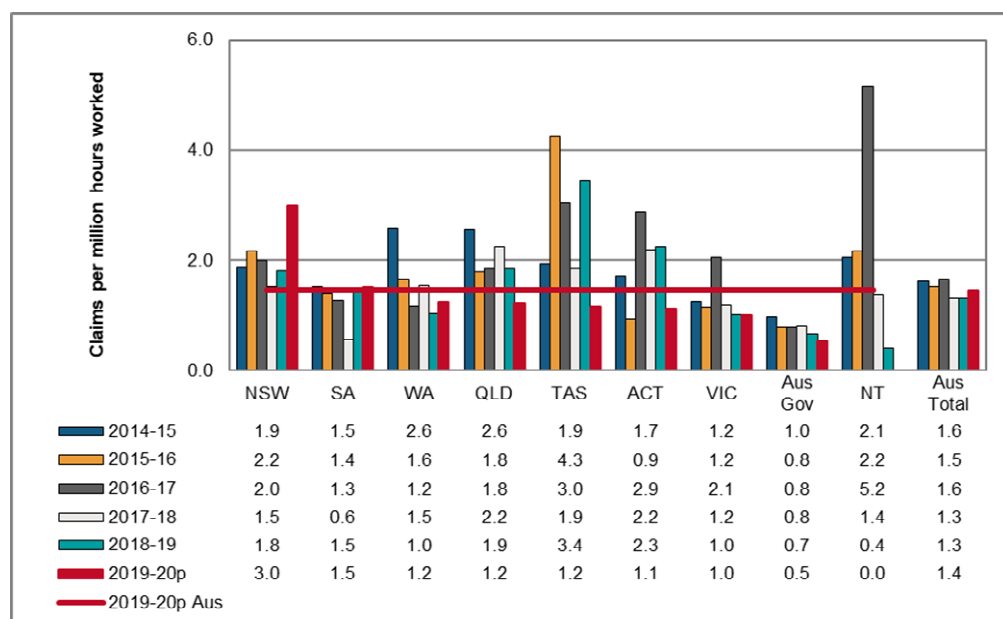
Indicator 11i – Frequency rates of serious claims for Transport, postal and warehousing by jurisdiction



Information media and telecommunications

- The Australian frequency rates of claims for this industry in 2019–20p was 1.4 claims per million hours worked.
- New South Wales (3.0 claims per million hours worked) recorded the highest rate and the Australian Government (0.5 claims per million hours worked) the lowest in 2019–20p. The Northern Territory did not have any reportable serious claims in 2019–20p.
- The overall frequency rate for this industry **decreased by 18%** between 2014–15 and 2018–19, with 7 out of 9 jurisdictions recording decreases. Northern Territory (**down 80%**) recorded the largest decrease. Tasmania (**up 79%**) and the Australian Capital Territory (**up 32%**) were the only jurisdictions to record increases.

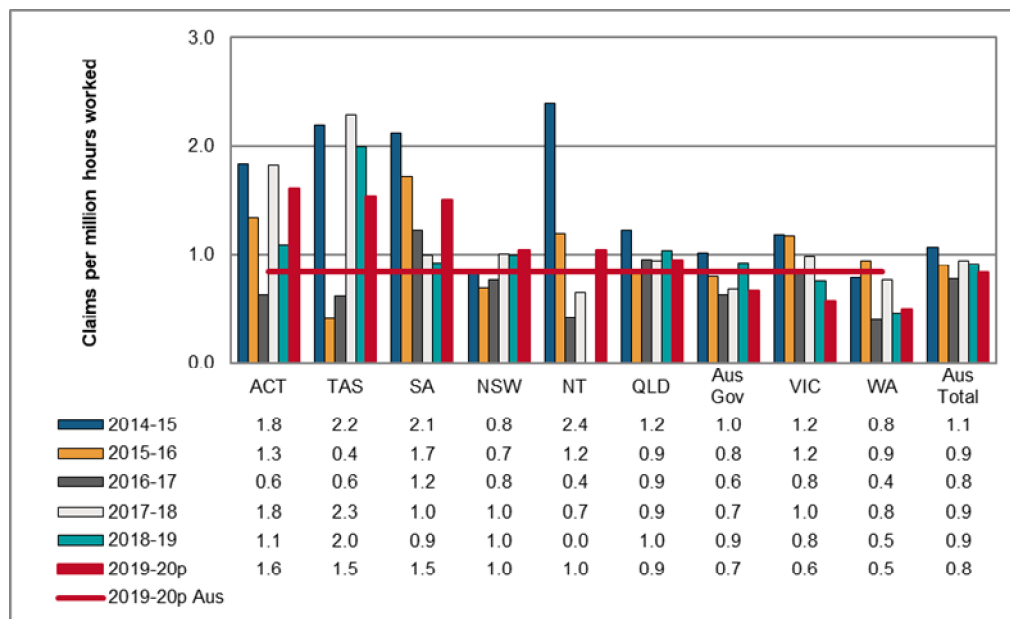
Indicator 11j – Frequency rates of serious claims for Information media and telecommunications by jurisdiction



Financial and insurance services

- The Australian frequency rate for this industry in 2019–20p was 0.8 claims per million hours worked, the lowest frequency rate among all industries.
- In 2019–20p the Australian Capital Territory recorded the highest frequency rate (1.6 claims per million hours worked) and Western Australia recorded the lowest (0.5 claims per million hours worked).
- Between 2014–15 and 2018–19, the frequency rate for this industry **decreased by 15%**. Seven jurisdictions recorded a decrease, with the largest being recorded by South Australia (**↓ down 57%**). The only increase was recorded by New South Wales during this period (**↑ up 17%**). The Northern Territory did not have any reportable serious claims in this industry in 2018–19.

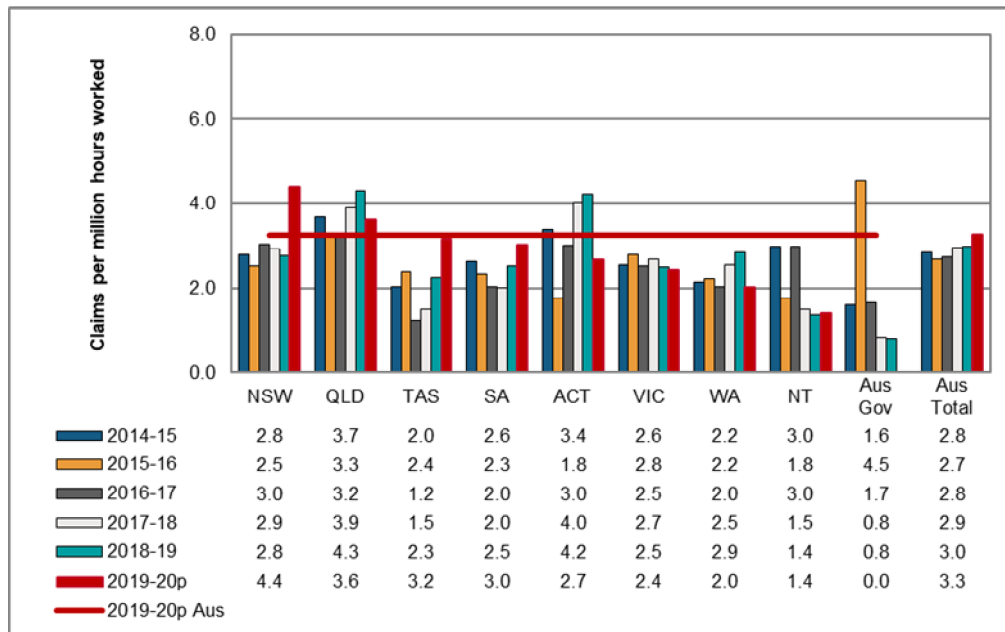
Indicator 11k – Frequency rates of serious claims for Financial and insurance services by jurisdiction



Rental, hiring and real estate services

- The Australian frequency rate for this industry was 3.3 claims per million hours worked in 2019–20p.
- New South Wales (4.4 claims per million hours worked) recorded the highest frequency rate and the Northern Territory (1.4 claims per million hours worked) the lowest in 2019–20p. The Australian Government did not have any reportable claims in this industry in 2019–20p.
- Overall, the frequency rate for this industry **increased by 5%** between 2014–15 and 2018–19. Western Australia (**↑ up 32%**) reported the largest increase. The Northern Territory (**↓ down 54%**) reported the largest decrease, followed by the Australian Government (**↓ down 50%**) during this period.

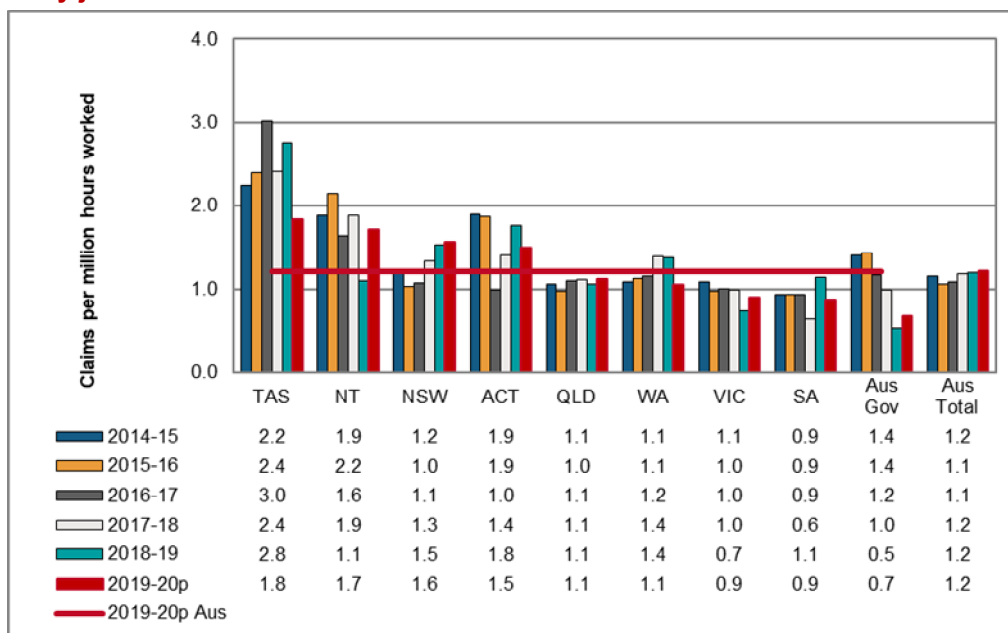
Indicator 11l – Frequency rates of serious claims for Rental, hiring and real estate services by jurisdiction



Professional, scientific and technical services

- Compared to all other industries, this industry had the second lowest Australian frequency rate at 1.2 claims per million hours worked in 2019–20p.
- In 2019–20p, Tasmania recorded the highest frequency rate (1.8 claims per million hours worked) whereas the Australian Government recorded the lowest frequency rate (0.7 million hours worked)
- Between 2014–15 and 2018–19, the frequency rate for this industry **increased 4%**. The Australian Government (**↓ down 62%**) recorded the largest decrease while Western Australia (**↑ up 27%**) recorded the highest increase.

Indicator 11m – Frequency rates of serious claims for Professional, scientific and technical services by jurisdiction

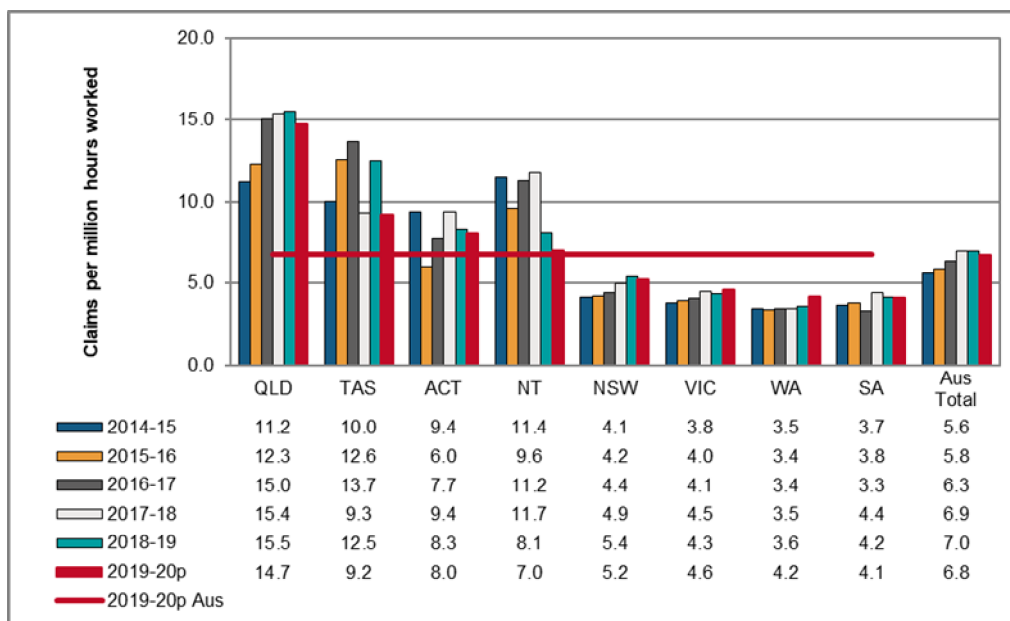


Administrative and support services

- The Australian frequency rate in this industry was 6.8 claims per million hours worked in 2019–20p.
- Queensland had the highest frequency rate in 2019–20p (14.7 claims per million hours worked) and South Australia had the lowest (4.1 claims per million hours worked).
- Overall, the frequency rate for this industry **increased 25%** between 2014–15 and 2018–19, with 6 out of 8 jurisdictions recording increases. Queensland recorded the highest increase (**↑ up 39%**). The Northern Territory recorded the largest decrease (**↓ down 29%**), followed by the Australian Capital Territory (**↓ down 12%**).

The Australian Government has not reported any claims for this industry for the reference period.

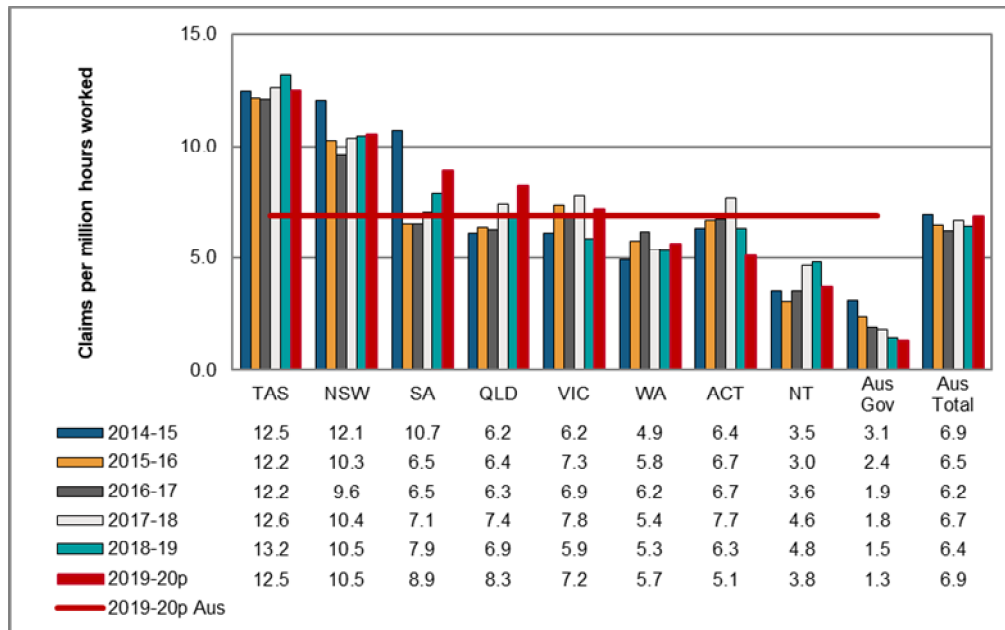
Indicator 11n – Frequency rates of serious claims for Administrative and support services by jurisdiction



Public administration and safety

- The Australian frequency rate of claims in the Public administration and safety industry was 6.9 claims per million hours worked in 2019–20p.
- Tasmania (12.5 claims per million hours worked) reported the highest frequency rate in 2019–20p and the Australian Government (1.3 claims per million hours worked) the lowest.
- Overall, the frequency rate for this industry **decreased by 7%** between 2014–15 and 2018–19. The Australian Government recorded the largest decrease (**↓ down 52%**), followed by South Australia (**↓ down 26%**). The Northern Territory reported the largest increase (**↑ up 36%**).

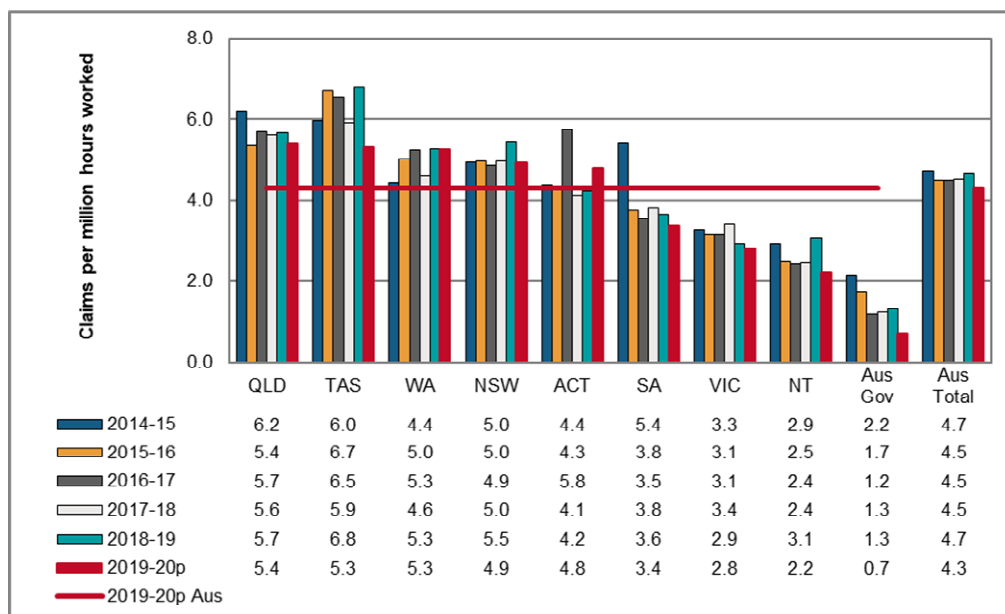
Indicator 11o – Frequency rates of serious claims for Public administration and safety by jurisdiction



Education and training

- The Australian frequency rate for the Education and training industry was 4.3 claims per million hours worked in 2019–20p.
- In 2019–20p, Queensland recorded the highest frequency rate (5.4 claims per million hours worked) and the Australian Government recorded the lowest (0.7 claims per million hours worked).
- Between 2014–15 and 2018–19 the frequency rate for this industry **decreased by 1%**. The Australian Government (**down 39%**) recorded largest decrease, followed by South Australia (**down 33%**). Western Australia (**up 19%**) reported the largest increase, followed by Tasmania (**up 14%**).

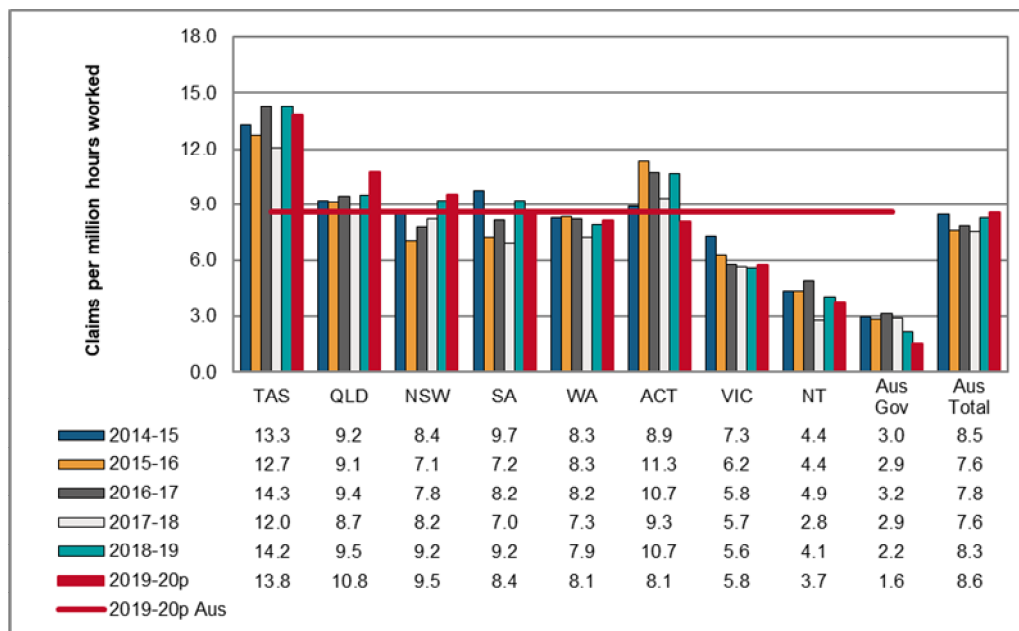
Indicator 11p – Frequency rates of serious claims for Education and training by jurisdiction



Healthcare and social assistance

- The Australian frequency rate of claims in this industry in 2019–20p was 8.6 claims per million hours worked.
- Tasmania recorded the highest frequency rate (13.8 claims per million hours worked) and the Australian Government recorded the lowest frequency rate (1.6 claims per million hours worked)
- Overall, the frequency rate for this industry **decreased by 2%** between 2014–15 and 2018–19. The Australian government (**↓ down 25%**) recorded the largest decrease, closely followed by Victoria (**↓ down 24%**). Australian Capital Territory (**↑ up 20%**) recorded the largest increase.

Indicator 11q – Frequency rates of serious claims for Healthcare and social assistance by jurisdiction

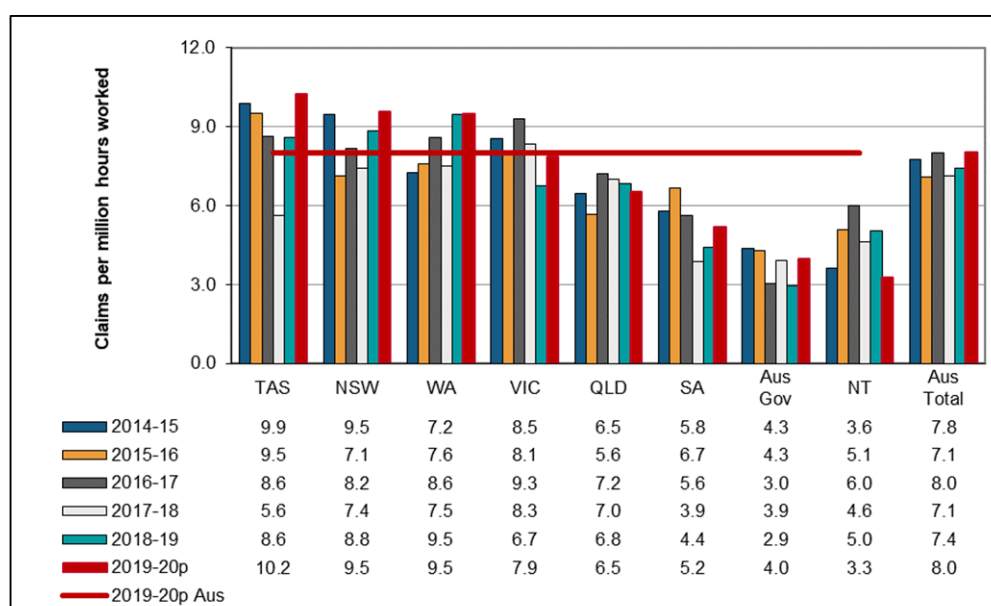


Arts and recreation services

- The Australian frequency rate for this industry in 2019–20p was 8.0 claims per million hours worked.
- In 2019–20p, Tasmania recorded the highest rate (10.2 claims per million hours worked) and the Northern Territory recorded the lowest rate (3.3 claims per million hours worked).
- Between 2014–15 and 2018–19, the frequency rate for this industry **decreased by 4%**. Australian Government (**↓ down 32%**) recorded the largest decrease and the Northern Territory (**↑ up 39%**) recorded the largest increase.

The frequency rates of the Australian Capital Territory were not reported here due to the high relative standard error.

Indicator 11r – Frequency rates of serious claims for Arts and recreation services by jurisdiction

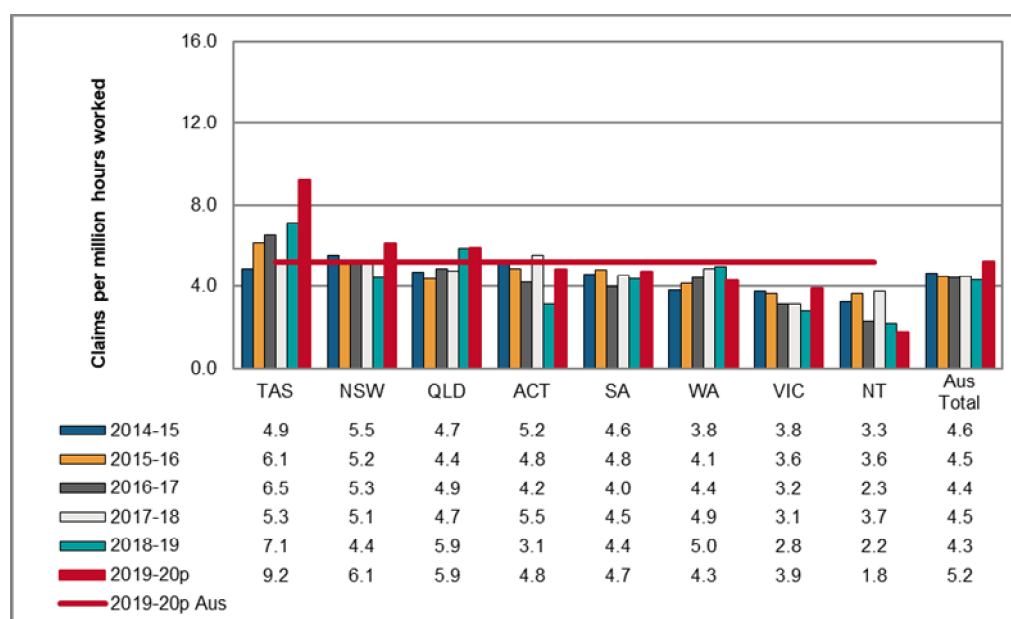


Other services

- The Australian frequency rate of claims in the Other services industry was 5.2 claims per million hours worked in 2019–20p.
- In 2019–20p, Tasmania recorded the highest frequency rate (9.2 claims per million hours worked) and the Northern Territory recorded the lowest (1.8 claims per million hours worked).
- Between 2014–15 and 2018–19 the frequency rate for this industry **decreased by 7%**, with 5 out of 8 industries recording decreases. The Australian Capital Territory (**↓ down 40%**) recorded the highest decrease. Tasmania (**↑ up 46%**), Western Australia (**↑ up 30%**) and Queensland (**↑ up 26%**) all recorded increases over the same period.

The frequency rates of the Australian Government were not reported here due to the high relative standard error.

Indicator 11s – Frequency rates of serious claims for Other services by jurisdiction



Appendix 1 — Further information

Glossary

Definition of injury and disease

Occupational injuries are defined as all employment-related injuries that are the result of a single traumatic event, occurring while a person is on duty or during a recess period at the workplace, and where there was a short or non-existent latency period.

Occupational diseases are defined as all employment-related diseases that result from repeated or long term exposure to an agent(s) or event(s), or that are the result of a single event resulting in a disease (for example, the development of hepatitis following a single exposure to the infection). The data in this report do not cover all cases of occupational injury and diseases as workers' compensation generally covers employees only (not contractors and self-employed workers). The incidence and frequency rates shown in this report for all industries are calculated using a denominator that has been adjusted to exclude self-employed persons.

The data in this report has been classified using the Type of Occurrence Classification System (TOOCS). More information on the TOOCS can be found on the [Safe Work Australia](#) website.

Exclusions

The following have been excluded from the data in this report:

- occupational injuries and diseases resulting in absences from work of less than one working week,
- police in Western Australia and military personnel within the Defence force,
- cases not claimed as workers' compensation or not acknowledged as being work-related, and
- claims for compensation to the Dust Diseases Authority of New South Wales.

National Data Set for Compensation-based Statistics

The data presented in this report are extracted from the National Data Set for Compensation-based Statistics (NDS), which is compiled annually from claims made under state, territory and Commonwealth workers' compensation Acts. The New Zealand Accident Compensation Corporation (ACC) also collects data in accordance with the NDS. Further information about the NDS can be found on the [Safe Work Australia](#) website.

Serious claim

A serious claim is a workers' compensation claim for an incapacity that results in a total absence from work of one working week or more. Claims excluded from this definition include those arising from a work-related fatality or a journey to or from work or during a recess period. One working week is defined as lost when the number of hours lost is greater than or equal to the number of hours usually worked per week.

Traumatic Injury Fatalities

This edition sources information from the Traumatic Injury Fatalities (TIF) collection. This collection sources data from workers' compensation data, fatality notifications to the various work health and safety authorities and information in the National Coronial Information System (NCIS). Further information about the TIF collection can be found on the [Safe Work Australia](#) website.

Time series and adjustment of scheme data

The estimates of the number of employees and their hours worked for Australia are supplied by the Australian Bureau of Statistics and these denominator data are based on the Labour Force Survey, the Survey of Employment and Earnings and data provided by Comcare and the Australian Capital Territory Government. Further adjustments are performed using data from the Census, the Forms of Employment Survey and the Survey of Employment Arrangements, Retirement and Superannuation.

These data are matched to the scope of the claims data but may not be exact, particularly in the smaller jurisdictions, due to the number of employees being derived from a survey of the population rather than a census.

The New Zealand employment data used has been sourced from the New Zealand census information.

Incidence and frequency rates, especially for the most recent years, are expected to rise as the number of accepted claims increases, as more claim are lodged and finalised. This may involve additional claims being accepted or shorter-term claims with temporary incapacity incurring additional time lost and subsequently matching the definition of a serious claim: one that involves one or more working weeks of time lost.

Claims data shown in this report for 2019–20 are preliminary and likely to change. Therefore, these data items are likely to be understated and a comparison of 2018–19 data with those of previous years should be undertaken with caution.

A range of factors can affect the analysis of trends over time, including changes to jurisdictions' legislative and administrative arrangements. Further details of these changes should be sought from the jurisdictions. Any commentary relating to these comparisons should be interpreted carefully.

Frequency rates for the Seacare scheme have been calculated using a 24-hour basis. This is to recognise the 24-hour risk of exposure to workplace hazards due to the nature of employment in the maritime industry. This definition is consistent with data published by the Seacare Authority.

More information on adjustments made to jurisdictions' data can be found in the Explanatory notes: National data set for compensation-based statistics for Safe Work Australia on the [Safe Work Australia](#) website.

Appendix 2 – Jurisdictional contact information

Jurisdiction	Organisation	Contact details
New South Wales	State Insurance Regulatory Authority	13 10 50 contact@sira.nsw.gov.au www.sira.nsw.gov.au
	SafeWork NSW	contact@safework.nsw.gov.au www.safework.nsw.gov.au
	NSW Personal Injury Commission	1800 742 679 www.pi.nsw.gov.au
	icare NSW	www.icare.nsw.gov.au
Victoria	WorkSafe Victoria	Advisory Service 1800 136 089 info@worksafe.vic.gov.au www.worksafe.vic.gov.au
Queensland	Office of Industrial Relations	Infoline 1300 362 128 www.worksafe.qld.gov.au
Western Australia	WorkCover WA	1300 794 744 www.workcover.wa.gov.au
	Department of Mines, Industry Regulation and Safety – WorkSafe	1300 307 877 www.dmirs.wa.gov.au
South Australia	ReturnToWorkSA	13 18 55 www.rtwsa.com
	SafeWork SA	1300 365 255 www.safework.sa.gov.au
Tasmania	WorkSafe Tasmania	1300 366 322 (inside Tas) (03) 6166 4600 (outside Tas) wstinfo@justice.tas.gov.au www.worksafe.tas.gov.au
Northern Territory	NT WorkSafe	1800 019 115 ntworksafe@nt.gov.au www.worksafe.nt.gov.au
Australian Capital Territory	WorkSafe ACT	13 22 81 www.worksafe.act.gov.au
Seacare	Seacare Authority	(02) 6275 0070 seacare@comcare.gov.au www.seacare.gov.au
Australian Government	Comcare	1300 366 979 www.comcare.gov.au
New Zealand	Accident Compensation Corporation	64 7 848 7400 www.acc.co.nz
	WorkSafe New Zealand	0800 030 040 www.worksafe.govt.nz