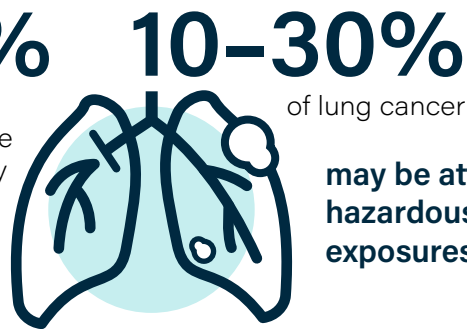
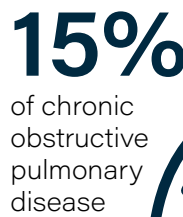
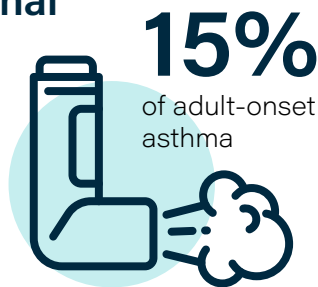


Occupational Lung Diseases

International estimates

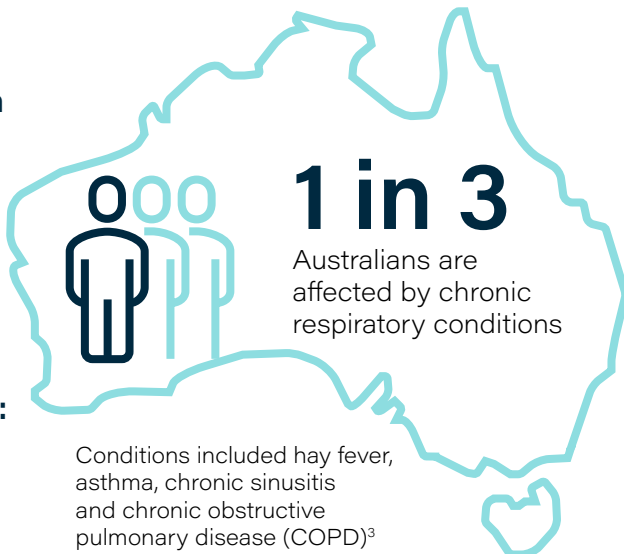



may be attributable to hazardous occupational exposures.¹

It is estimated that occupational exposure in Australia contributes to:



The Australian Bureau of Statistics (ABS) 2017-18 National Health Survey estimates:



Workers compensation claims in Australia have increased over the past decade 



This increase in claims is likely due to new screening regimes implemented in some states and territories, and greater awareness and monitoring of respiratory diseases across Australia.

¹ The Medical Journal of Australia

² Lung Foundation Australia

³ Australian Institute of Health and Welfare

⁴ Safe Work Australia