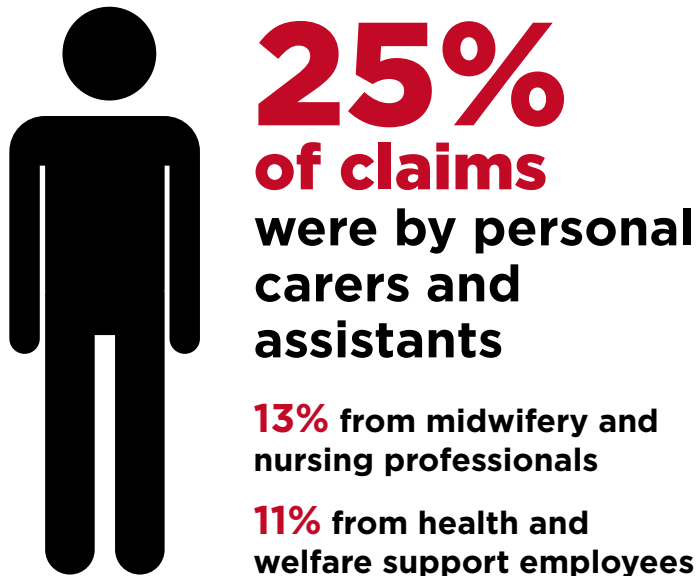
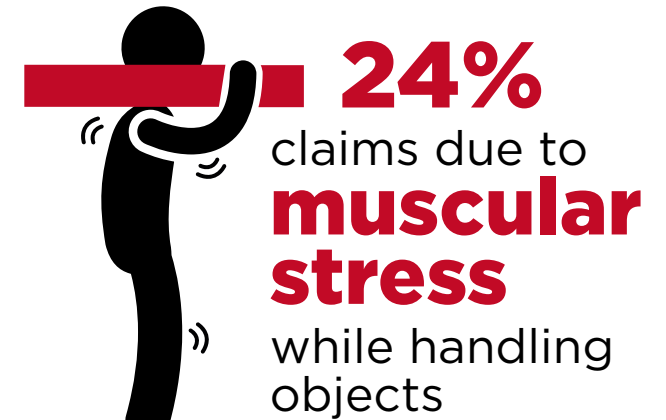
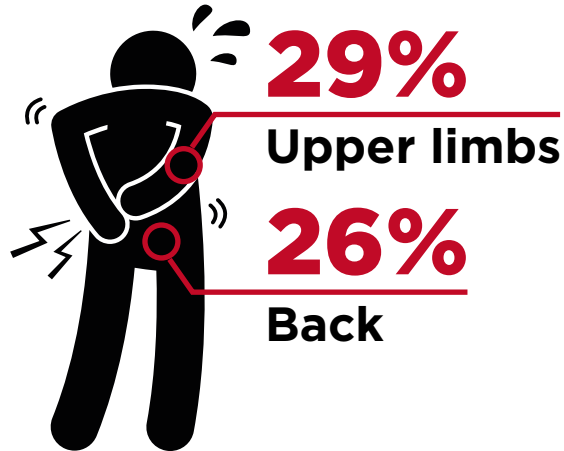
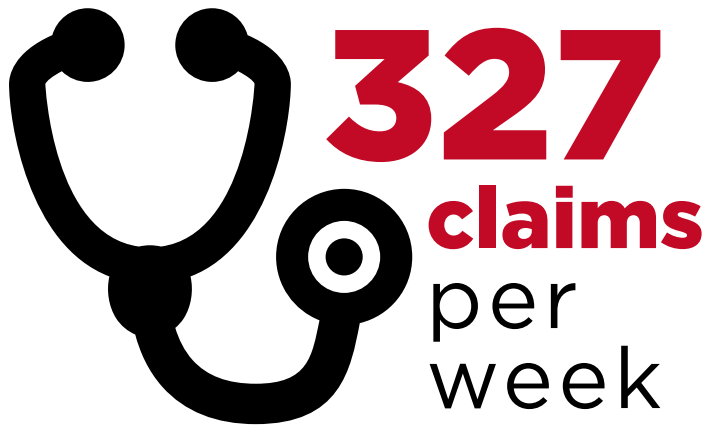


# Serious claims in healthcare and social assistance 2013-14 to 2017-18



Note: The data contained in this infographic relates to the Health care and social assistance industry. With over 12.4m workers in 2017-18, 13% of the workforce was from health care and social assistance industry and had 16% of serious claims. Source: Safe Work Australia's National Dataset for Compensation-based Statistics.