

NOTIFIED FATALITIES STATISTICAL REPORT

2008–09



DECEMBER 2009



safe work australia

© Commonwealth of Australia 2009

ISBN 978-0-642-32924-0

This work is copyright. You may download, display, print and reproduce this material for your personal, non-commercial use or use within your organisation, provided that an appropriate acknowledgement is made (retaining this notice), and the material is not altered or subjected to derogatory treatment. Apart from any use as permitted under the Copyright Act 1968, all other rights are reserved. Requests and inquiries concerning reproduction and rights should be addressed to Commonwealth Copyright Administration, Attorney-General's Department, Robert Garran Offices, National Circuit, Barton ACT 2600 or posted at <http://www.ag.gov.au/cca>

Disclaimer

The information provided in this document can only assist you in the most general way. This document does not replace any statutory requirements under any relevant State and Territory legislation. Safe Work Australia is not liable for any loss resulting from any action taken or reliance made by you on the information or material contained on this document. Before relying on the material, users should carefully make their own assessment as to its accuracy, currency, completeness and relevance for their purposes, and should obtain any appropriate professional advice relevant to their particular circumstances.

To the extent that the material on this document includes views or recommendations of third parties, such views or recommendations do not necessarily reflect the views of Safe Work Australia or indicate its commitment to a particular course of action.

CONTENTS

PAGE

SUMMARYv

NOTIFIABLE FATALITIES INFORMATION BOX1

INTRODUCTION1

INDUSTRY1

TIME SERIES BY INDUSTRY2

OCCUPATION4

AGE5

TIME SERIES BY AGE6

CAUSES OF FATALITY7

BYSTANDERS9

SUMMARY OF NOTIFICATION NARRATIVES10

**SUMMARY OF WORKER FATALITY NOTIFICATIONS
FOR AGRICULTURE, FORESTRY & FISHING 11**

SUMMARY OF FINDINGS

This report provides an analysis of data on work-related fatalities between 1 July 2008 and 30 June 2009 that were notified to OHS jurisdictions under their OHS legislation.

All notified fatalities

- > In 2008–09 there were 177 notified work-related fatalities — 151 workers and 26 bystanders.
- > Most fatalities were of men — 158 in total. There were 17 fatalities of women (including 11 bystanders) and sex was unknown for 2 other fatalities.
- > Four industries accounted for seven out of every ten notified work-related fatalities — 26% of fatalities occurred at a workplace primarily engaged in Agriculture, forestry & fishing; 18% in Construction; 15% in Transport & storage; and 9% in Mining.
- > The most common causes of the fatalities were *Vehicle accidents* (54 fatalities); *Being hit by moving objects* (34 fatalities); *Falls from a height* (20 fatalities); *Being hit by falling objects* (16 fatalities); and *Drowning/immersion* (14 fatalities).
- > Among *Vehicle accidents*, 24 fatalities occurred on public roads and 30 occurred elsewhere, including 6 fatalities during air travel. Since work-related road traffic fatalities are not notified to some OHS jurisdictions, the counts presented in this report are likely to under-report their occurrence.

Notified worker fatalities

- > There were 19 more notified worker fatalities in 2008–09 (151) than in 2007–08 (132) — an increase of 14%. This resulted in a 17% increase in the overall worker fatality incidence rate from 1.2 fatalities per 100 000 workers in 2007–08 to 1.4 in 2008–09.
- > The occupation group *Intermediate production & transport workers* contributed one-third of all notified worker fatalities (47 fatalities) for which occupation was known.
- > Two industries experienced a considerable increase in worker fatalities in 2008–09 in comparison to the number recorded in 2007–08. Fatalities at Agriculture, forestry & fishing workplaces increased from 26 to 45 and fatalities at Mining workplaces increased from 4 to 16. For both these industries the number of fatalities in 2008–09 was the highest recorded since the collection commenced in 2003–04.
- > One-quarter (25%) of all notified worker fatalities of known age were aged 55 years or older. In 2008–09 workers within this age group represented 16% of all employed Australians. This over-representation of older workers has been a consistent feature of work-related fatality notifications in every year since the collection commenced.
- > Compared to 2007–08, the age distribution of notified worker fatalities in 2008–09 is skewed towards younger ages. The major contributor to this shift is the number of young workers who died at Agriculture, forestry & fishing workplaces: 9 aged 15–24 years and 13 aged 25–34 years.

INTRODUCTION

In 2008–09 Australian occupational health and safety (OHS) jurisdictions reported a total of 177 work-related notifiable fatalities to Safe Work Australia. Of these fatalities, 151 were workers and 26 were bystanders (people who suffered a fatal injury as a result of someone else’s work activity).

Most of the fatalities were of men: 17 fatalities were of women, and of those, 11 were bystanders. Because work-related fatalities are predominantly of men, table and graphs in this publication are not further disaggregated on the basis of sex.

Most vehicle accidents on public roads are investigated by the police, so those that are work-related may not be reported to OHS authorities. Because of this known limitation, notifications where the fatality was caused by a vehicle accident are identified as occurring on public roads or elsewhere. The reader should note that of the 54 fatalities caused by *vehicle accidents*, 24 occurred on public roads (see Table 1). This component of vehicle related notifications is known to undercount such occurrences.

INDUSTRY

Table 2 shows the number of notified work-related fatalities during 2008–09 according to the industry of the workplace and the industry of the worker’s employer. The industry of workplace identifies the primary work activity conducted at the site where the incident leading to the fatality occurred.

Agriculture, forestry & fishing industry workplaces accounted for the largest number of notified

NOTIFIABLE FATALITIES

Occupational health and safety (OHS) legislation in each Australian state and territory requires work-related deaths to be notified to the state or territory OHS authority. Notifications cover workers (both employees and self-employed) who suffered a fatal injury at work or while commuting to or from work, and bystanders who suffered a fatal injury as a result of work activity. Notified fatalities that occurred while commuting to or from work, and those resulting from suicide or natural causes (e.g. stroke or heart attack) are not included in this report.

The compilation of notifications at the national level is complicated by differences across jurisdictions in the definition of a work-related death and the coverage of some incidents. In particular:

- > Several jurisdictions do not include work-related deaths caused by vehicle accidents on public roads in their notification systems. These fatalities are instead notified to and investigated by the police.
- > Aircraft crash fatalities are not notified to some OHS jurisdictions. These fatalities are instead notified to the relevant transport authority.

fatalities (46 fatalities). Other industries with a high number of notified fatalities were Construction workplaces (31 fatalities); Transport & storage (26 fatalities); Mining (16 fatalities) and Manufacturing (13 fatalities).

Table 1 Notified fatalities by place of fatality, Australia, 2008–09

Place of fatality	Worker	Bystander	Total
At worksite	106	17	123
Vehicle accident ^(a) on public road	17	7	24
Vehicle accident ^(a) elsewhere	28	2	30
Total	151	26	177

(a) Includes rollover of mobile mechanical equipment such as tractors, forklifts and construction vehicles.

Table 2 also shows the fatality incidence rate for workers (the number of notified worker fatalities per 100 000 workers) by the industry of employer.

In 2008–09, the highest notified fatality incidence rate occurred among workers employed in the Agriculture, forestry & fishing industry — 12.3 notified worker fatalities per 100 000 workers. This rate was not only the highest rate recorded over the period 2003–04 to 2008–09 for Agriculture, forestry & fishing workplaces, but also the highest rate recorded over the six-year period for any industry. Other industries with rates well above the national rate of 1.4 worker fatalities per 100 000 workers were Mining (8.4 worker fatalities

per 100 000 workers); Transport & storage (3.8 worker fatalities per 100 000 workers); and Construction (3.0 worker fatalities per 100 000 workers).

TIME SERIES BY INDUSTRY

Table 3 shows the annual number of notified fatalities of workers according to the industry of the workplace at which the fatal injury occurred for the six financial years from 2003–04. Bystander fatalities are excluded from this analysis.

Table 3 shows that the total number of worker fatalities notified to Safe Work Australia increased

Table 2 Number of notified fatalities by industry, 2008–09

Industry	Industry of workplace ^(a)			Industry of employer ^{(a)(b)}	
	Worker	Bystander	Total	Worker	Incidence rate ^(c)
Agriculture, forestry & fishing	45	1	46	44	12.3
Construction	27	4	31	30	3.0
Transport & storage	18	8	26	20	3.8
Mining	16	0	16	14	8.4
Manufacturing	13	0	13	11	1.0
Cultural & recreational services	1	6	7	0	0.0
Retail trade	6	1	7	3	0.2
Personal & other Services	4	1	5	4	0.6
Wholesale trade	5	0	5	5	1.2
Electricity, gas & water supply	4	0	4	2	1.9
Government administration & defence	4	0	4	4	0.7
Property & business services	4	0	4	11	0.9
Accommodation, cafes & restaurants	2	1	3	0	0.0
Health & community services	0	2	2	2	0.2
Communication services	1	0	1	1	0.5
Finance & insurance	0	1	1	0	0.0
Industry unknown or not applicable	0	0	0	0	na
Private residence	1	1	2	na	na
Total	151	26	177	151	1.4

na denotes 'not applicable'.

(a) *Industry of workplace* identifies the main industrial activity conducted at the workplace where the fatal incident occurred. *Industry of employer* identifies the main industry conducted by the employer of the fatally-injured worker, which will sometimes differ from the Industry of workplace — for example, where a worker is employed under a labour hire arrangement to provide services at a workplace. *Industry of workplace* would therefore more accurately reflect the actual work tasks and circumstances associated with a fatal workplace incident.

(b) *Industry of employer* is not applicable for bystanders.

(c) Fatalities per 100 000 workers. Calculated using annual averages of employed people (civilians) from ABS quarterly industry labour force data and the number of Defence force personnel serving in Australia in 2007–08 — used as a substitute for 2008–09 numbers (*ABS Supercube E06-Aug94.srd 3 digit industry figures concurred from ANZSIC 2006 to 1993 industry divisions. Department of Defence Annual Report 2008–09*).

between 2003–04 and 2006–07, from 123 to 149 fatalities. This resulted in an increase in the fatality incidence rate from 1.3 fatalities per 100 000 workers in 2003–04 to 1.4 in 2006–07. In 2007–08, the number of fatalities decreased to 132, which, combined with the growth in the number of workers, resulted in a decrease in fatality incidence rate to 1.2 fatalities per 100 000 workers: the lowest recorded over the six-year

period. However, in 2008–09 the number of fatalities increased to 151, the highest recorded over the period, and the incidence rate returned to 1.4 fatalities per 100 000 workers.

Compared to earlier years, some industries have experienced large differences in the number of fatalities notified in 2008–09.

Table 3 Notified worker fatalities by industry of workplace, 2003–04 to 2008–09^(a)

Industry of workplace	Year					
	2003–04	2004–05	2005–06	2006–07	2007–08	2008–09
Agriculture, forestry & fishing	42	39	33	26	26	45
Construction	24	18	25	29	37	27
Transport & storage	9	21	18	23	25	18
Mining	11	9	11	13	4	16
Manufacturing	7	6	21	18	18	13
Retail trade	3	2	7	3	3	6
Wholesale trade	1	1	1	3	2	5
Electricity, gas & water supply	3	4	3	1	2	4
Government administration & defence	2	8	6	2	3	4
Personal & other services	8	4	5	6	1	4
Property & business services	0	4	1	1	3	4
Accommodation, cafes & restaurants	1	2	3	4	0	2
Communication services	2	0	1	0	2	1
Cultural & recreational services	1	5	0	7	3	1
Education	2	1	3	1	0	0
Health & community Services	1	1	1	0	2	0
Finance & insurance	0	0	0	0	0	0
Industry unknown or not applicable	2	2	2	7	0	0
Private residence	4	1	3	5	1	1
Total	123	128	144	149	132	151
Fatality incidence rate(b)	1.3	1.3	1.4	1.4	1.2	1.4
Fatalities due to public road & air crashes	1	11	3	11	18	23
Total excluding public road & air crashes	122	117	141	138	114	128
Fatality incidence rate(b) excluding public road & air crashes	1.3	1.2	1.4	1.3	1.1	1.2

(a) Excludes bystanders. Industries are ranked on the number of fatalities in 2008–09.

(b) Fatalities per 100 000 workers. Calculated using annual averages of monthly data for employed people (civilians) and the number of Defence force personnel serving in Australia (*Australian Bureau of Statistics 6202.0 Labour Force, Australia. Table 03. Labour Force Status by Sex. Department of Defence Annual Report* for the reference year).

The number of fatalities of workers at Agriculture, forestry & fishing workplaces decreased progressively: from 42 in 2003–04 to 26 in 2007–08. However, the 45 fatalities notified in 2008–09 is the highest recorded over the six-year period. This ranking also applies to the 16 fatalities that occurred at Mining workplaces in 2008–09: a distinct contrast to the 4 fatalities notified in 2007–08, the lowest number recorded over the six-year period.

Conversely, Construction; Transport & storage; and Manufacturing workplaces recorded fewer fatalities in 2008–09 than 2007–08. These decreases were from 37 fatalities to 27 for Construction workplaces; from 25 fatalities to 18 for Transport & storage workplaces; and from 18 fatalities to 13 for Manufacturing workplaces.

The reader should note that increases over the six-year period in the number of Transport & storage workplace fatalities may be related to improved reporting of work-related fatalities involving vehicle accidents on public roads. Because the police generally investigate vehicle accidents on public roads, many work-related fatalities involving vehicles are not notified to state or territory OHS jurisdictions. However, several national road transport companies are now self-insuring under the Commonwealth OHS jurisdiction (Comcare), which includes these incidents in its notifications.

Because work-related fatalities involving vehicle accidents on public roads and those involving

aircraft are known to be under-reported, Table 3 also presents the total number of worker fatalities and the fatality rate calculated excluding public road crashes and air crashes. The differences between the two sets of rates, particularly in the most recent three years of the six-year period, partially reflect the increase in notifications reported for work-related fatalities involving vehicles on public roads over the period. This increase in notifications seems to reflect improved reporting of such incidents by jurisdictions other than Comcare.

OCCUPATION

Figure 1 shows the number of work-related fatalities notified during 2008–09 according to the worker’s occupation at the time the fatal injury was sustained. Bystander fatalities are excluded from this analysis. The occupation group *Intermediate production & transport workers* contributed one-third (47 fatalities) of all notified worker fatalities for whom the occupation was known. This occupation group includes road transport drivers, operators of moving and stationary plant, and machine operators.

Other occupation groups that incurred many worker fatalities were *Tradespersons & related workers* (38 fatalities) and *Labourers & related workers* (29 fatalities). There were also 14 fatalities of *Managers & administrators*: 9 of whom were *Farmers or farm managers*.

Figure 1 Number of notified worker fatalities by occupation, 2008–09

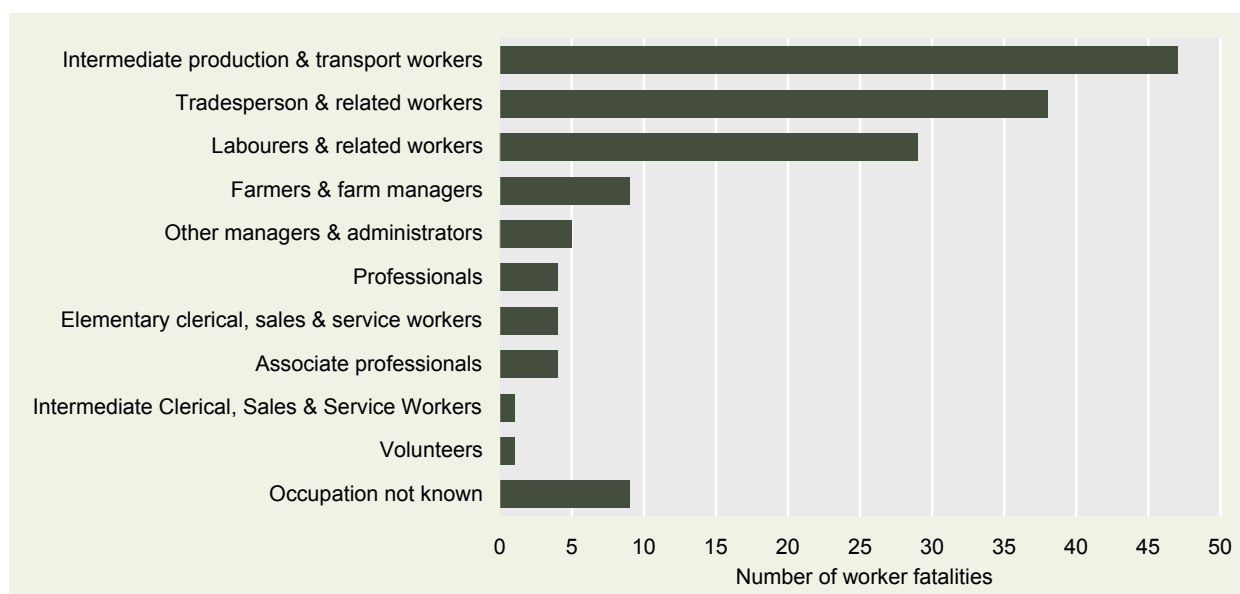
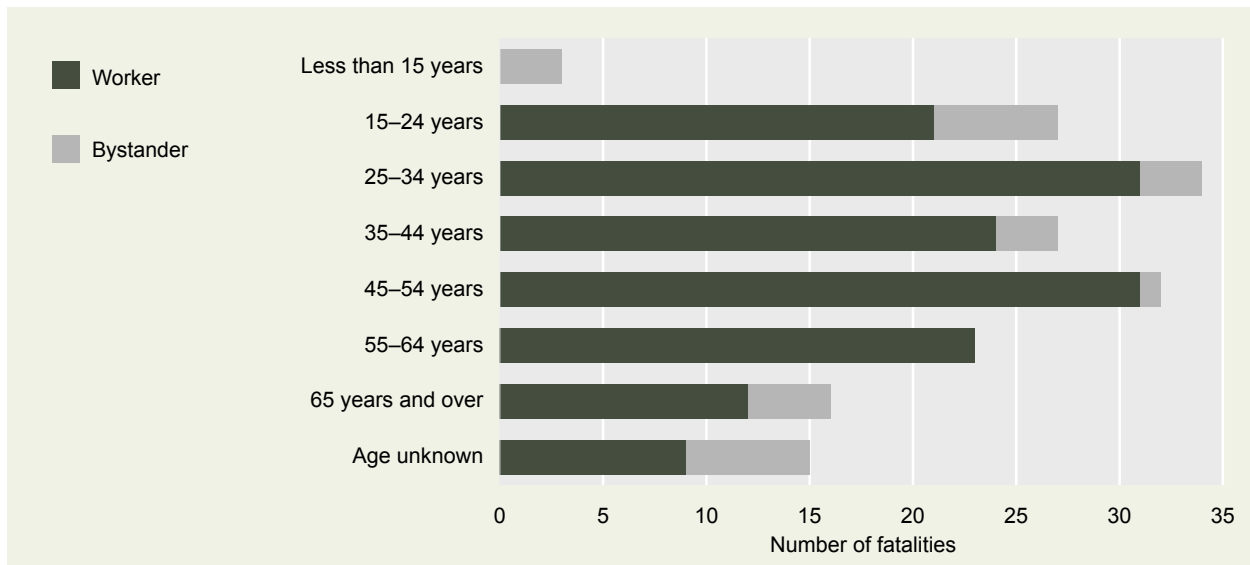


Figure 2 Number of notified fatalities by age, 2008–09



AGE

Figure 2 shows the number of notified work-related fatalities during 2008–09 grouped on the age of the worker or bystander. However, the following analysis excludes bystanders. The ages of the worker fatalities (for whom age was known) were concentrated in the three age groups 25–34 years (31 fatalities); 35–44 years (24 fatalities); and 45–54 years (31 fatalities). These three age groups accounted for 86 worker fatalities (61% of worker fatalities of known age). There were 21 fatalities of workers aged 15–24 years: the highest number recorded within this age group since the collection commenced.

To compare differences in the risk of fatality between workers in each age group, the number of notified worker fatalities in each age group can be expressed as a rate against the number of workers in that age group (Figure 3). These rates show that work-related fatalities were more likely to occur among older workers. The rates for workers aged 55–64 years and 65 years and over were 1.6 and 4.4 respectively per 100 000 workers, compared with rates of 1.1 and 1.3 fatalities per 100 000 workers for workers aged 15–24 years and 25–34 years respectively.

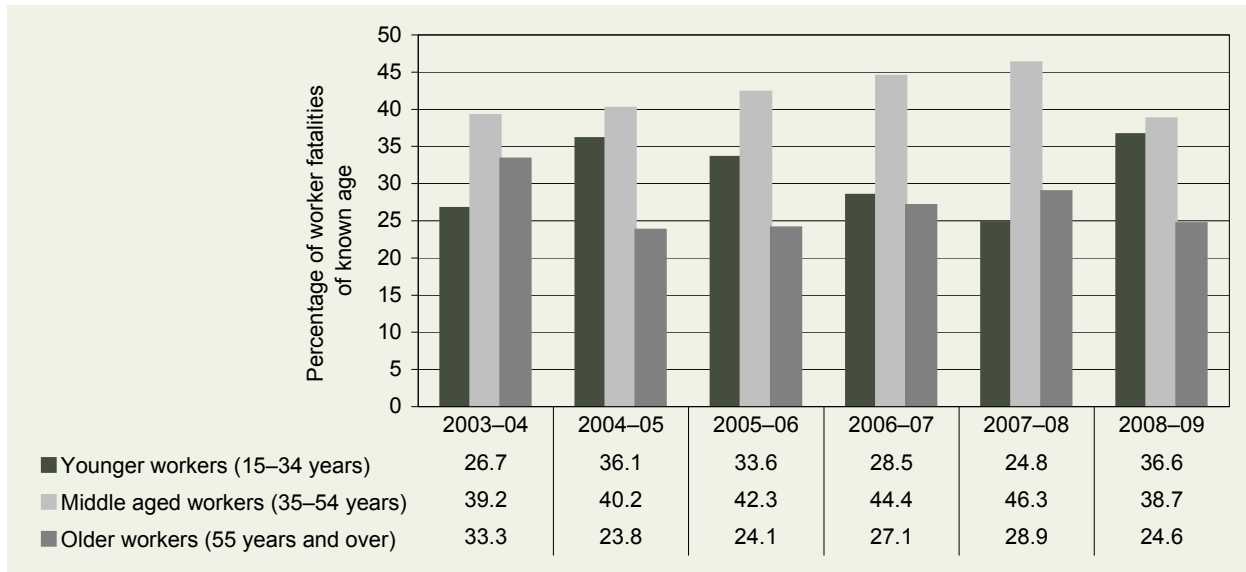
Figure 3 Incidence rate of notified worker fatalities by known age, 2008–09^(a)



(a) Excludes bystanders.

(b) Incidence rates are calculated using annual averages of monthly figures for employed people (ABS 6291.0.55.001 Labour Force, Australia, Detailed – Electronic Delivery. Table 01. Labour force status by social marital status, age and sex).

Figure 4 Percentage distribution of notified worker fatalities of known age by broad age group, 2003–04 to 2008–09



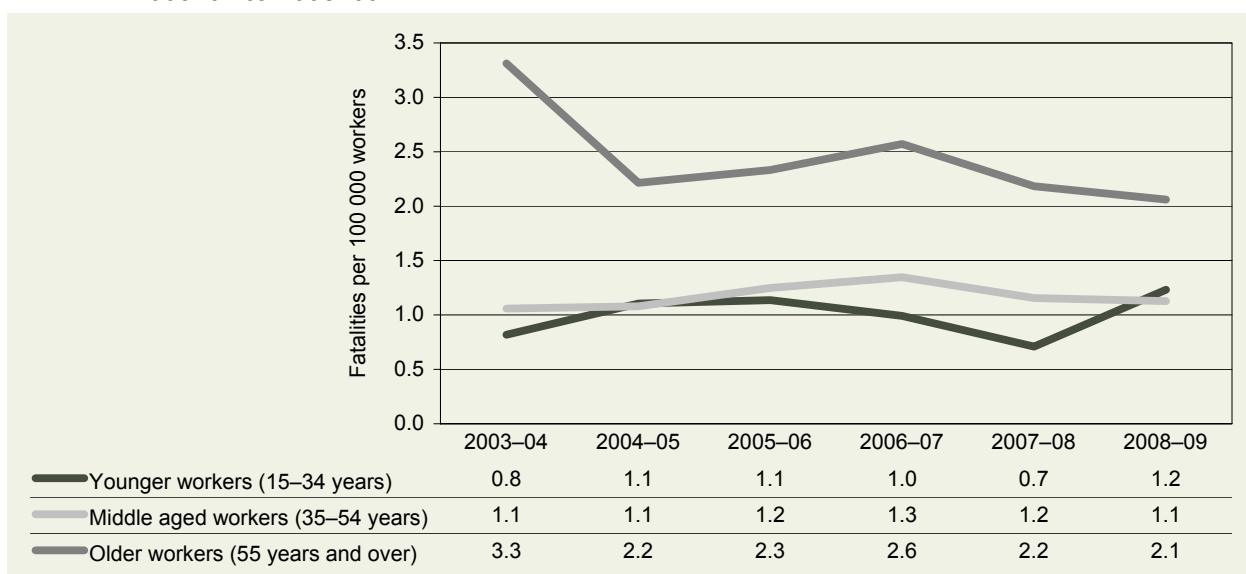
TIME SERIES BY AGE

Figure 4 shows the broad age distribution of worker fatalities from 2003–04 to 2008–09. In all years the age of the deceased worker most commonly fell in the Middle age group (35–54 years). However, the balance between the percentage of fatalities in the Older and the Younger worker age groups has varied. In 2003–04 and 2007–08 the distribution was skewed towards Older workers. In all other years the distribution was skewed towards Younger workers. The major contributor to this pattern in 2008–09 was the number of Younger workers who died at Agriculture, forestry & fishing workplaces:

9 workers aged 15–24 years (5 involved quad-bikes or motorbikes) and 13 workers aged 25–34 years. Also contributing to the number of fatalities of young workers aged 15–24 years were 5 deaths that occurred at Manufacturing workplaces: the highest number of 15–24 year old fatalities recorded in the industry over the six-year period. The 9 workers aged 15–24 years in Agriculture, forestry & fishing workplaces was also the highest number recorded in the industry over the six-year period.

Figure 5 shows the incidence of fatalities by broad age group from 2003–04 to 2008–09. The graph shows that Older workers (aged 55 years

Figure 5 Incidence rate of notified worker fatalities of known age by broad age group, 2003–04 to 2008–09



and over) experienced the highest incidence rate of fatality in all years: though the rate has fallen overall across the six-year period. Younger workers experienced the lowest incidence rates with the exception of 2004–05, when the rate for both Younger and Middle aged workers was the same (1.1 fatalities per 100 000 workers), and 2008–09 when the rate was higher than that for Middle aged workers (1.2 fatalities per 100 000 workers and 1.1 respectively).

CAUSE OF FATALITY

Detailed information about how the fatal injury was sustained is used to assign various descriptive codes. The Mechanism code identifies the overall action, exposure or event that best describes the circumstances that resulted in the fatality. The following analysis excludes bystanders.

Table 4 shows that the most common mechanism of fatality for workers was *Vehicle accidents*, responsible for 45 worker fatalities. Other common

mechanisms were *Being hit by moving objects* (29 fatalities); *Falls from a height* (20 fatalities); *Being hit by falling objects* (15 fatalities); *Being trapped between stationary & moving objects* (8 fatalities); and *Drowning or immersion* (8 fatalities).

The Breakdown agency code identifies the object, substance or circumstance that was principally involved in, or most closely associated with, the point at which things started to go wrong and which ultimately led to the fatality.

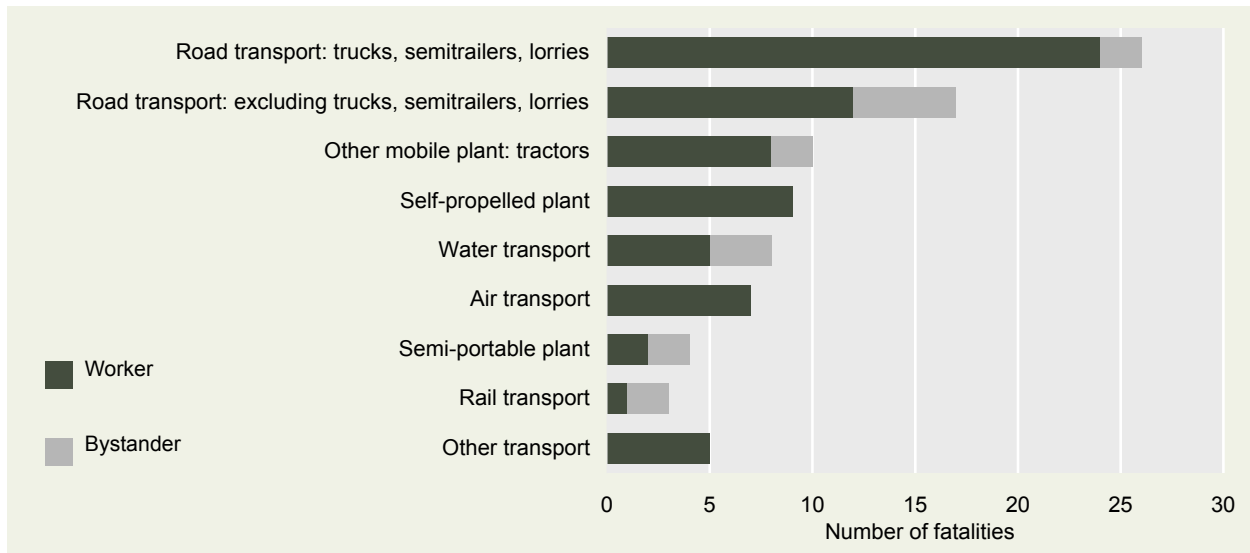
Table 4 shows that the most common breakdown agency was *Mobile plant & transport*, which was involved in 73 (48%) of the 151 worker fatalities. Figure 6 shows the sub-categories of breakdown agency involved in these 73 worker fatalities (as well as bystander fatalities). Notably, *Road transport* was involved in half of the worker fatalities (36 fatalities) — of these, 24 involved *Trucks, semitrailers or lorries*. *Other mobile plant*, all of which were tractors, accounted for 8 worker

Table 4 Number of notified worker fatalities by mechanism and breakdown agency, 2008–09

Mechanism of fatality	Breakdown agency of fatality						
	Mobile plant & transport	Machinery & fixed plant	Environmental agencies	Non-powered handtools, appliances & equipment	Powered equipment, tools & appliances	Other agency or agency not stated	All agencies
Vehicle accidents ^(a)	40	0	3	0	0	2	45
Being hit by moving objects	16	6	0	4	3	0	29
Falls from a height	4	0	9	5	0	2	20
Being hit by falling objects	2	4	2	3	0	4	15
Being trapped between stationary & moving objects	4	4	0	0	0	0	8
Drowning/immersion	5	0	2	0	0	1	8
Being trapped by moving machinery	2	5	0	0	0	0	7
Contact with electricity	0	6	0	0	1	0	7
Other mechanism of fatality	0	1	3	1	1	6	12
All mechanisms	73	26	19	13	5	15	151

(a) Includes rollovers of mobile mechanical equipment such as tractors, forklifts and construction vehicles.

Figure 6 Notified fatalities for the breakdown agency Mobile plant & transport, 2008–09



fatalities involving *Mobile plant & transport*. The third most common cause of *Mobile plant & transport* related fatalities was *Self-propelled plant*, accounting for 9 out of 73 fatalities: these included 4 fatalities that involved front-end loaders or log handling plant and 2 that involved mining plant.

The second most common breakdown agency was *Machinery & fixed plant*. This agency was involved in 26 worker fatalities, of which 16 involved *Conveyors & lifting plant* (6 of which involved *Cranes*) and 6 involved *Electrical installations*.

Environmental agencies were involved in 19 worker fatalities. These fatalities mainly involved the *Outdoor environment*: including 6 fatalities that involved *Buildings or other structures*; 4 that involved *Vegetation*; and 2 that involved *Holes in the ground*.

Non-powered hand tools, appliances and equipment were involved in 13 worker fatalities, including 2 that involved *Ladders* and 4 that involved *Scaffolding*.

Common associations between the mechanism and breakdown agency of fatalities are apparent in Table 4.

There were 40 worker fatalities where the mechanism *Vehicle accidents* was associated with the breakdown agency *Mobile plant & transport*. There were also 16 worker fatalities where the mechanism *Being hit by moving objects* was associated with *Mobile plant & transport*. These fatalities predominantly involved pedestrians being hit by a vehicle (5 by a vehicle in control of another person and 7 by an unattended vehicle).

There were 9 worker fatalities where the mechanism *Falls from a height* was associated with the breakdown agency *Environmental agencies*. Of these, 5 fatalities involved a fall from a *Building & other structures* and 2 from *Steps & stairways*.

There were 5 worker fatalities where the mechanism *Falls from a height* was associated with the breakdown agency *Non-powered handtools, appliances & equipment*. For 3 of these fatalities the agency was *Scaffolding* and for the remaining 2, *Ladders*.



BYSTANDERS

Because of the relatively small annual number of notified bystander fatalities, their random nature, and jurisdictional legislative differences, the circumstances of bystander incidents can vary considerably year to year. These fatalities are defined as deaths of members of the public, such as passers-by or visitors to workplaces — including children — who die as a consequence of another person’s work activity. This can include people under the supervision of a worker providing guidance or instruction.

A total of 26 bystander fatalities occurred in 2008–09, including 3 children aged under 15 years. Of the 26 bystander fatalities, 11 were female, 13 were male and 2 where sex was not provided. In 2008–09 bystander fatalities most commonly occurred at workplaces that were primarily engaged in Transport & storage (8 fatalities); Cultural & recreational services (6 fatalities); and Construction (4 fatalities) (see Table 2).

Figure 2 (page 5) shows the age distribution of bystander fatalities in 2008–09: most occurred in the younger age groups: 3 were aged less than 15 years; 6 were aged 15–24 years; 3 were aged 25–34 years and 3 were aged 35–44 years.

Bystander summary 2008–09

There were 26 bystander fatalities notified in 2008–09. These included:

- > 9 bystander fatalities caused by vehicle accidents, of these 6 occurred when cars and trucks collided.
- > 6 bystander deaths due to drowning. Of these, 3 occurred while white-water rafting and 2 occurred while snorkelling or diving.
- > 4 bystander deaths that occurred when the person was hit by a vehicle, of these, 2 deaths occurred while the vehicle was reversing.

SUMMARY OF WORKER FATALITY NOTIFICATIONS

Vehicle accidents:

In 2008–09 there were 45 work-related notified fatalities of workers involving a vehicle accident (30% of all worker notifications). These included:

- > 8 deaths of truck drivers or passengers (7 occurred on public roads) 1 of whom died when their truck collided with a train at a level crossing.
- > 8 deaths of drivers or passengers of cars or other light four-wheeled vehicles. Of these, 5 deaths occurred on public roads, 2 on mine sites and 1 on a rural property.
- > 7 agricultural workers who died while riding quad bikes (ATVs).
- > 7 deaths while driving tractors, 6 of whom were agricultural workers. These deaths included 4 where the tractor rolled over on rural properties and 1 where the tractor collided with a train at a level crossing.
- > 5 motorcyclists, 4 of whom were agricultural workers.
- > 6 deaths that were due to aircraft accidents, of which 4 involved helicopters (2 of which occurred while undertaking rural activities) and 2 involved light aircraft (also while undertaking rural activities).
- > 2 train drivers killed in a collision with a truck at a level crossing.

Pedestrians struck by vehicles:

There were 14 worker fatalities caused by a moving vehicle striking the person. Of these:

- > 6 deaths involved vehicles (mostly trucks) in the control of another person, including 2 fatalities that happened when the vehicle was reversing.
- > 8 deaths involved unattended vehicles. These were 3 deaths of farmers struck by their tractor; 2 deaths while loading or unloading vehicles from transporters, and 3 deaths from vehicles moving while under repair.

Being struck by moving objects other than vehicles:

There were 13 fatalities resulting from a worker being struck by a moving object other than a vehicle. These included:

- > 6 that occurred because of failure or incident while working with chains, cables, ropes or power lines under tension.

Falls from a height:

There were 20 deaths of workers that fell from a height.

Of those 20 deaths, 8 occurred at Construction workplaces and of these:

- > 4 workers died because they fell from a building, including 2 deaths that occurred after a fall through or from roofs.
- > 2 workers died because they fell from scaffolding.
- > 2 workers died because of falls from a ladder.

The remaining 12 deaths occurred at workplaces other than Construction. These included:

- > 4 deaths occurred when the worker fell from a heavy vehicle or mobile plant.
- > 2 deaths involved falls from or through roofs.
- > 2 deaths involved falls from stairs.

Being struck by falling objects:

There were 15 worker fatalities caused by falling objects. These included:

- > 7 deaths that were broadly related to the failure of structures or equipment that allowed an object to fall.
- > 4 deaths that occurred while moving, loading or unloading objects.
- > 2 firefighters who died when hit by falling trees.

Being trapped by moving machinery or between stationary & moving objects:

There were 15 fatalities caused by the worker becoming trapped or entangled in moving machinery or caught between a stationary and moving object. These included:

- > 7 deaths that were directly related to vehicles: of these, 4 deaths occurred when a vehicle trapped the worker against an immovable object (in 2 of these deaths the vehicle was unattended) and 2 deaths occurred when the worker was crushed between two vehicles.
- > 4 deaths that involved being crushed by hydraulic equipment, 2 of those deaths involved cranes.

Deaths due or drowning or immersion:

There were 8 deaths where the worker drowned. These included:

- > 4 deaths when fishing vessels sank at sea.



SUMMARY OF WORKER FATALITY NOTIFICATIONS FOR AGRICULTURE , FORESTRY & FISHING WORKPLACES

There were 45 notified fatalities of Agriculture, forestry & fishing industry workers in 2008–09. Of these, 34 occurred at Agricultural workplaces; 7 occurred at Fishing workplaces; and 4 occurred at Forestry workplaces.

There were 34 fatalities that occurred on Agriculture workplaces: These included:

- > 8 deaths that involved operating tractors: of these deaths, 3 involved the worker being run over by their own tractor and 3 deaths involved the rollover of the tractor while driving.
- > 7 deaths that involved incidents on quad bikes (ATVs): of these deaths, 4 involved falls from a moving quad bike and 2 involved a rollover of the bike. In 3 of these 7 fatalities, the notification stated that the rider was not wearing a helmet (the status was unknown for the other 4 deaths).
- > 4 deaths that involved incidents on motorbikes: of these deaths, 2 involved collisions with another vehicle and 2 involved a fall from the moving bike. In 2 of these 4 fatalities, the notification stated that the rider was not wearing a helmet (one rider was wearing a helmet and the status was unknown for the other death).

[Of those 11 deaths involving quad bikes or motorcycles, 5 were of workers aged less than 20 years]

- > 5 deaths that involved aircraft incidents: of these deaths, 3 involved helicopters and 2 involved a light aircraft.
- > 3 deaths that involved falls from a height: the falls involved a silo, harvesting machinery and a horse.
- > 2 deaths that involved bullcatcher vehicles.
- > 2 deaths occurred while loading or unloading objects.

There were 7 fatalities that occurred at Fishing workplaces: These included:

- > 4 deaths when fishing vessels sank at sea.
- > 2 deaths that involved lifting equipment.

There were 4 fatalities that occurred at Forestry workplaces: These included:

- > 2 deaths that involved forestry-related mobile plant.

Inquires

For further information regarding the contents of this publication contact:

The Data & Analysis Section
Safe Work Australia

(02) 6121 9152

